

DDP 200

Single Drum Puller



HOGG & DAVIS, Inc.

**Designers and
Manufacturers
of Line
Construction
Equipment**

RUGGED DEPENDABILITY



Single-Drum Truck Mounted Puller

Performance:

Line Pull Rating	Continuous	20,000lbs-Full Drum
Speed	Infinitely Variable	0.0-4.0 MPH-Full Drum

Drum Capacity:

Rated Diameter	61"
Width	46-3/4"
Core Diameter	16"
Rope Rated Capacity	22,000' of 5/8" Diameter Cable
Number of Drums	1

Drive System:

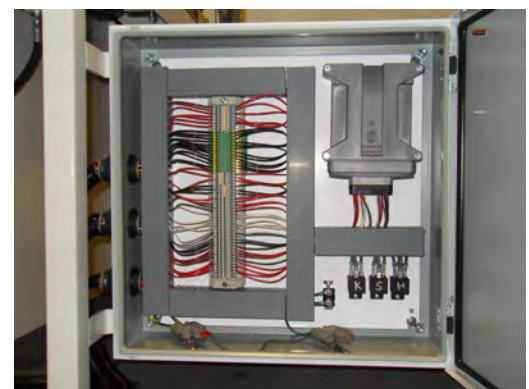
Engine	275hp John Deere Diesel
Hydraulic Drive	Closed Loop Hydrastatic
Drive Train Brake	Spring Applied/ Hydraulically Released
Drum Engagement	Manual mechanical clutch at drive motors
Over-Spin Brake	36" Diameter Stainless Steel Rotor
Brake Actuator	Accumulator with rotary adjustment

Unit Dimensions:

Length	280" (23' 4")
Width	101" (8' 4")
Height	80" (8' 5") Minus Truck Height
Weight (With Rope and Fluids)	60,560 lbs

Description:

The ODP200PPST single-drum puller is capable of line pull of 20,000lbs. An Over-spin brake with a hydraulic actuator is on the drum. Operator controlled post style level wind allows for even winding of the rope. All unit functions are centrally located at the operator's station. Engine display includes tachometer, temp, and voltage. This unit is equipped with a computer control that allows the operator to preset the Maximum Line Pull as well as the Maximum Line Speed.



Product improvements may be introduced at any time, specifications are subject to change without notice.



**P.O.Box 405
3800 Eagle Loop
Odell, Oregon 97044
TEL(541)354-1001
FAX(541)354-1080**

**Visit us at
www.hoggdavis.com**