

ODP 100PPS TM



The information, specifications, and illustrations in this manual are on the basis of information available at the time it was written. The specifications, torque values, pressures of operation, measurements, adjustments, illustrations, and other items can change at any time. These changes can affect the service of the given product.

For the complete and most current information, contact:

Hogg & Davis, Inc
P.O. Box 405 / 3800 Eagle Loop
Odell, OR 97044-0405
541-354-1001
541-354-1080 Fax

For most recent manual
version please visit:
www.hoggdavis.com

ODP 100PPS TM **10,000 Lb Drum Puller**

Table of Contents

Table of Contents	- 2 -
Product Warnings	- 3 -
General Specifications	- 4 -
Puller – Main Unit Curb Side.....	- 5 -
Puller – Main Unit – Street Side	- 7 -
Control Panel	- 8 -
Joystick Functions	- 9 -
Drive Engagement	- 11 -
Setup on the Job	- 12 -
Setup of the unit	- 12 -
Position of unit.....	- 12 -
Tie Down/ Brake/ Chock.....	- 12 -
Rope Payout Procedure (Free Wheel)	- 13 -
Pulling Computer	- 13 -
Operation	- 14 -
Setup Screen.....	- 14 -
Set Pull	- 15 -
Pull Screen - MAIN	- 15 -
Hours Screen	- 17 -
System Screen.....	- 18 -
Joystick.....	- 19 -
Engine.....	- 20 -
Pulling Control	- 21 -
System Brakes.....	- 21 -
Level wind.....	- 21 -
LUBRICATION AND MAINTENANCE	- 21 -
Set Screws.....	- 22 -
15-15 Warranty.....	- 23 -
Parts and other manufacturer manuals.....	- 24 -



"Rugged Dependability."

© COPYRIGHT 2013 HOGG & DAVIS, INC



ODP 100PPS TM 10,000 Lb Drum Puller

Product Warnings

⚠ DANGER

AN UNTRAINED OPERATOR
SUBJECTS HIMSELF AND
OTHERS TO

DEATH OR SERIOUS INJURY

YOU MUST NOT OPERATE
THIS MACHINE UNLESS

- You have been trained in the safe operation of this machine.
- You have read, understand and follow the safety and operating recommendations contained in the machine manufacturer's manuals, your employer's work rules and applicable government regulations.
- You are sure the machine is operating properly and has been inspected and maintained in accordance with the manufacturer's manuals.
- You are sure that all safety signs, guards and other safety features are in place and in proper condition.

© H&D, Inc. 1999

⚠ DANGER



REACHING INTO REEL AREA
OR CONTACTING TURNING
REEL OR MOVING LINE
DURING OPERATION MAY
RESULT IN

DEATH OR SERIOUS INJURY

© H&D, Inc. 1999

⚡ DANGER

ELECTROCUTION HAZARD EXISTS
WHEN PULLING LINE OR
CONDUCTOR IS NEAR ENERGIZED
LINES. MAKE SURE MACHINE IS
PROPERLY GROUNDED AND
OPERATOR IS PROPERLY
PROTECTED.

© H&D, Inc. 1999

⚠ DANGER



JACKSTAND AND OUTRIGGER
CONTACT WILL CAUSE SERIOUS
CRUSHING INJURY.

STAND CLEAR

⚠ WARNING



Escaping fluid under pressure
can penetrate skin causing
serious injury.

Relieve pressure before disconnecting
hydraulic lines. Keep away from leaks
and pin holes. Use a piece of cardboard
or paper to search for leaks. Do
not use your hand.

Fluid injected into skin must be
surgically removed within a few hours
by a doctor familiar with this type
injury or gangrene will result.

© H&D, Inc. 1999

These warning labels and others like it are placed in critical areas of the machine. The warnings are to be read and fully understood prior to operation of the unit.

ODP 100PPS TM 10,000 Lb Drum Puller

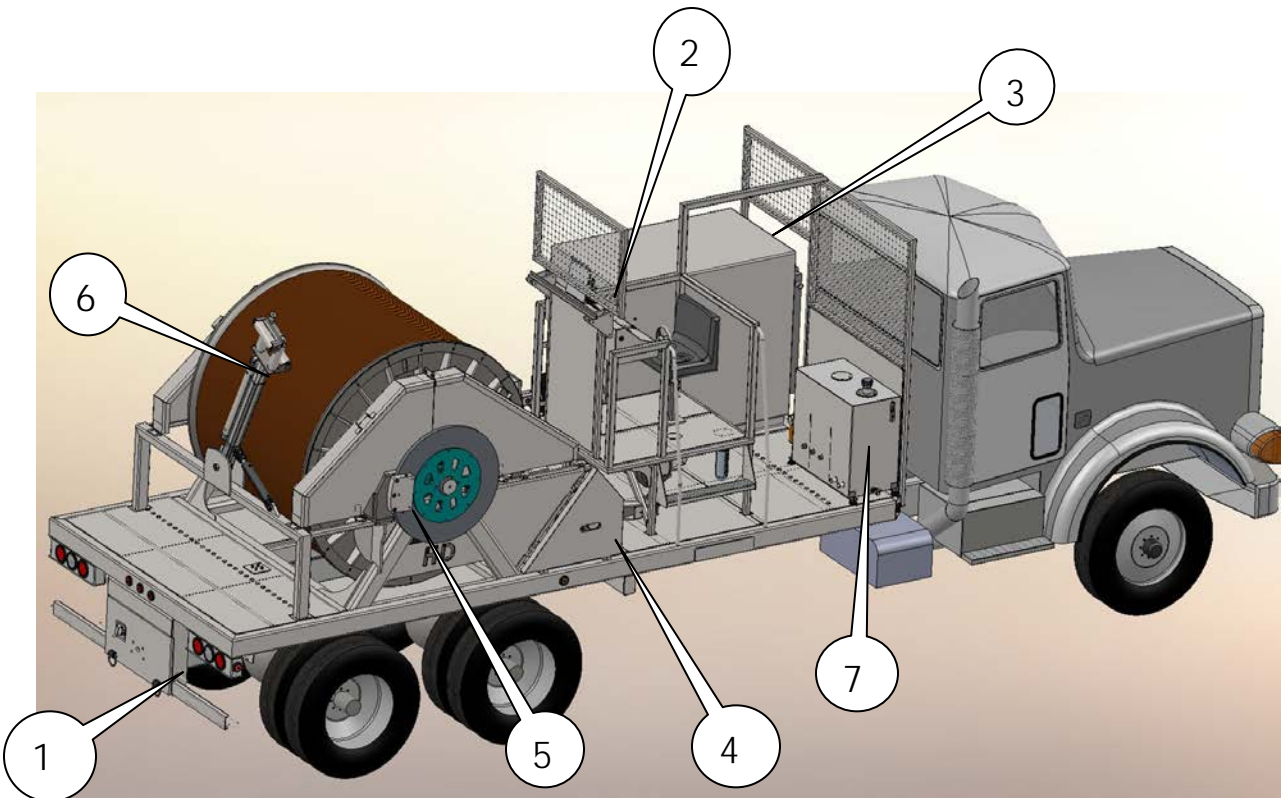
General Specifications

This unit is designed to install / tension overhead cable/conductor.

- Single Reel Puller
- Pulling Computer
- Constant Line Pull System
- 10,000 lbs Maximum Line Pull
- 185 hp John Deere Tier III Diesel
- 20,000' of 1" synthetic rope capacity
- Post Style Level wind
- Dual Drive System
- Fuel Capacity – 60 Gallons
- Hydraulic Oil Capacity – 59 Gallons



ODP 100PPS TM 10,000 Lb Drum Puller



Operating Instructions

All persons operating this machine must read and understand this manual as well as the operating, danger, and warning decals placed on the machine. Failure to read and understand these items subjects the operator and others to **DEATH or SERIOUS INJURY**.

Operators shall make themselves familiar with the placement of the following operating and safety features of the machine.

Puller – Main Unit Curb Side

1. Grounding Lugs. There are two lugs welded to rear of the truck chassis. **They are to be used for grounding only.**

ODP 100PPS TM 10,000 Lb Drum Puller

2. Operators Station
3. Hydraulic Oil Cooler. This unit transfers the heat from the hydraulic oil during use. It is to be kept clean and clear of dust and debris. Failure to do so may increase hydraulic system operating temperature and may also damage the components in the system.
4. Drive Dog Clutches. There is a unit located on both sides. These are the primary drives for the pulling operation. **DO NOT OPERATE THE UNIT WITHOUT BOTH DRIVES ENGAGED.** It may be necessary for the operator to rotate the reel to allow for the drive dogs to be engaged
5. Brake Rotor and Caliper. This brake system is for use during the free wheel payout of the installation rope. During the free wheel operation of the unit, this rotor will become extremely hot. **DO NOT OPERATE THE PULLING FUNCTION OF THIS UNIT WHILE THE BRAKE SYSTEM IS APPLIED.**
6. Level wind. This unit is controlled by a momentary switch on the operator's console. It is independently operated.
7. Hydraulic Tank. ISO 46 or equivalent. 62 gallons



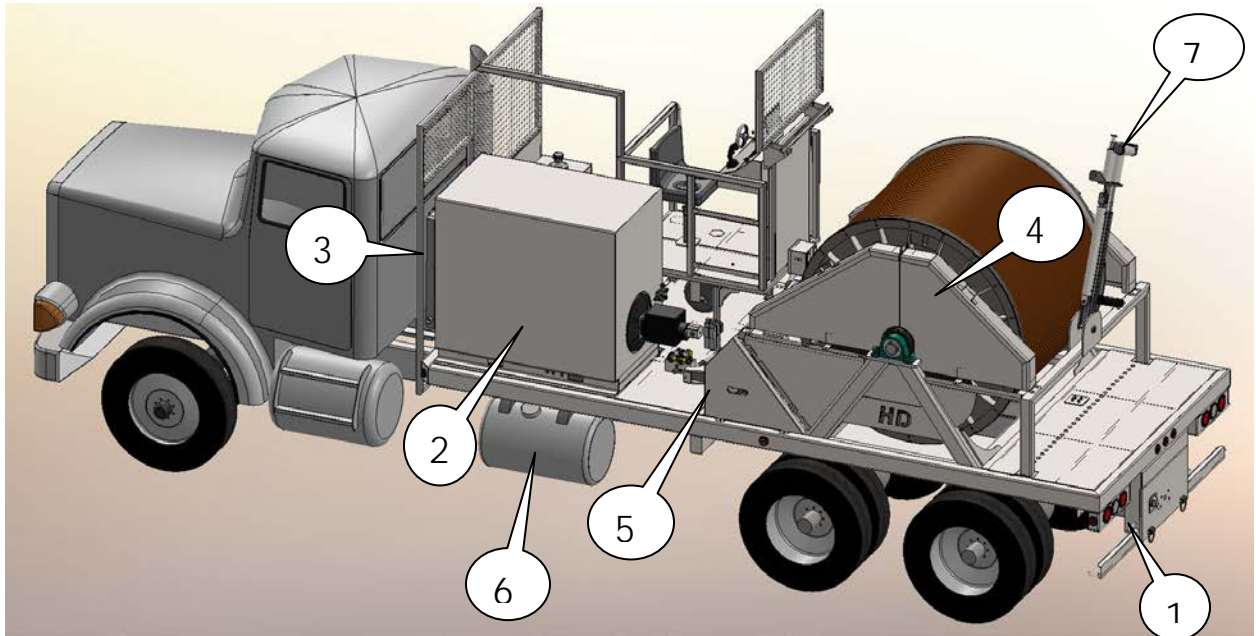
"Rugged Dependability."

© COPYRIGHT 2013 HOGG & DAVIS, INC



ODP 100PPS TM 10,000 Lb Drum Puller

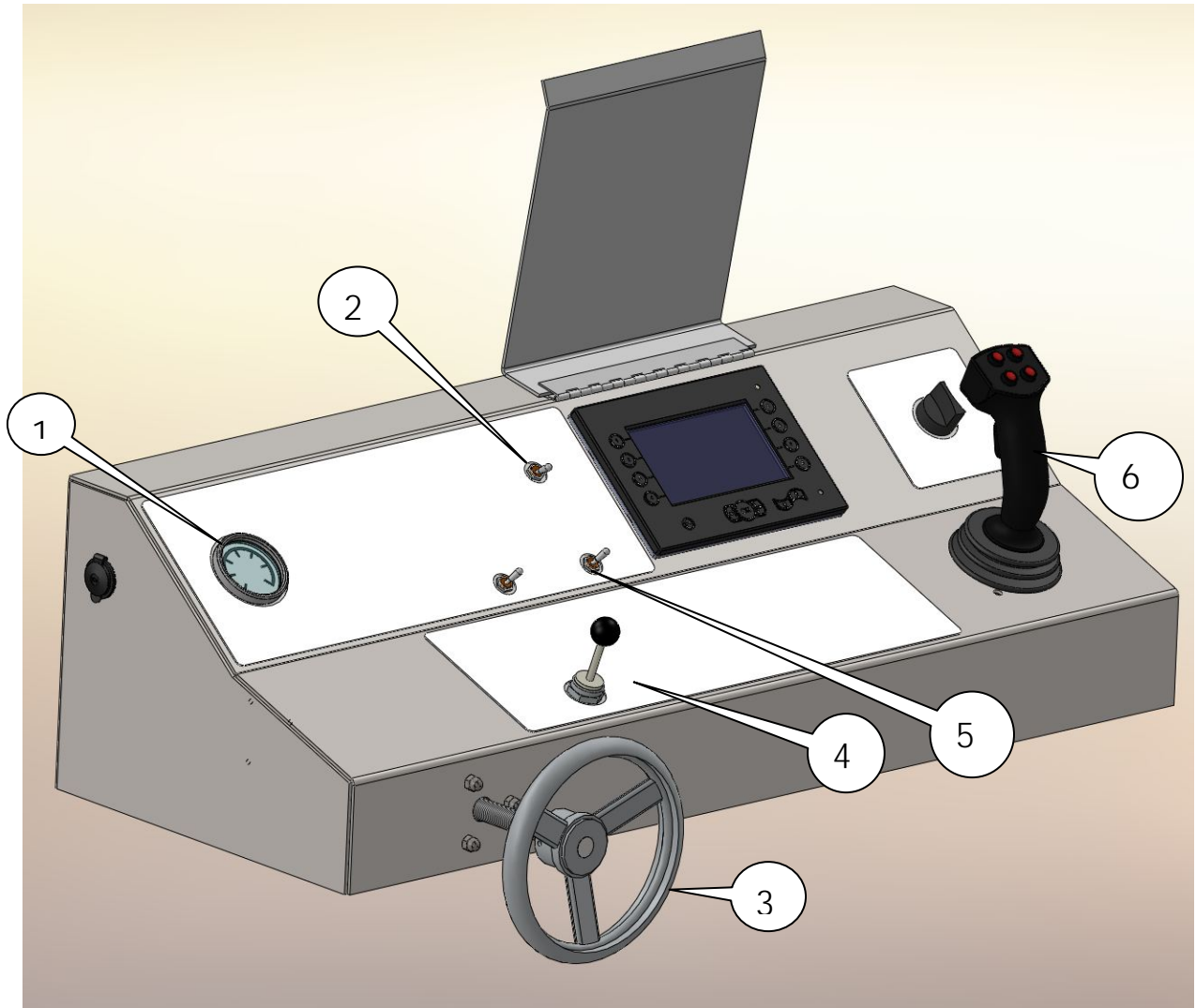
Puller – Main Unit – Street Side



1. Grounding Lug
2. Engine Access
3. Oil cooler and radiator
4. Chain Guards. Located on both sides of large secondary sprocket. **DO NOT OPERATE PULLER WHILE THESE ARE NOT ON THE UNIT.**
5. Drive Dog Clutches. There is a unit located on both sides. These are the primary drives for the pulling operation. **DO NOT OPERATE THE UNIT WITHOUT BOTH DRIVES ENGAGED.**
6. Fuel Tank
7. Level Wind

ODP 100PPS TM 10,000 Lb Drum Puller

Control Panel

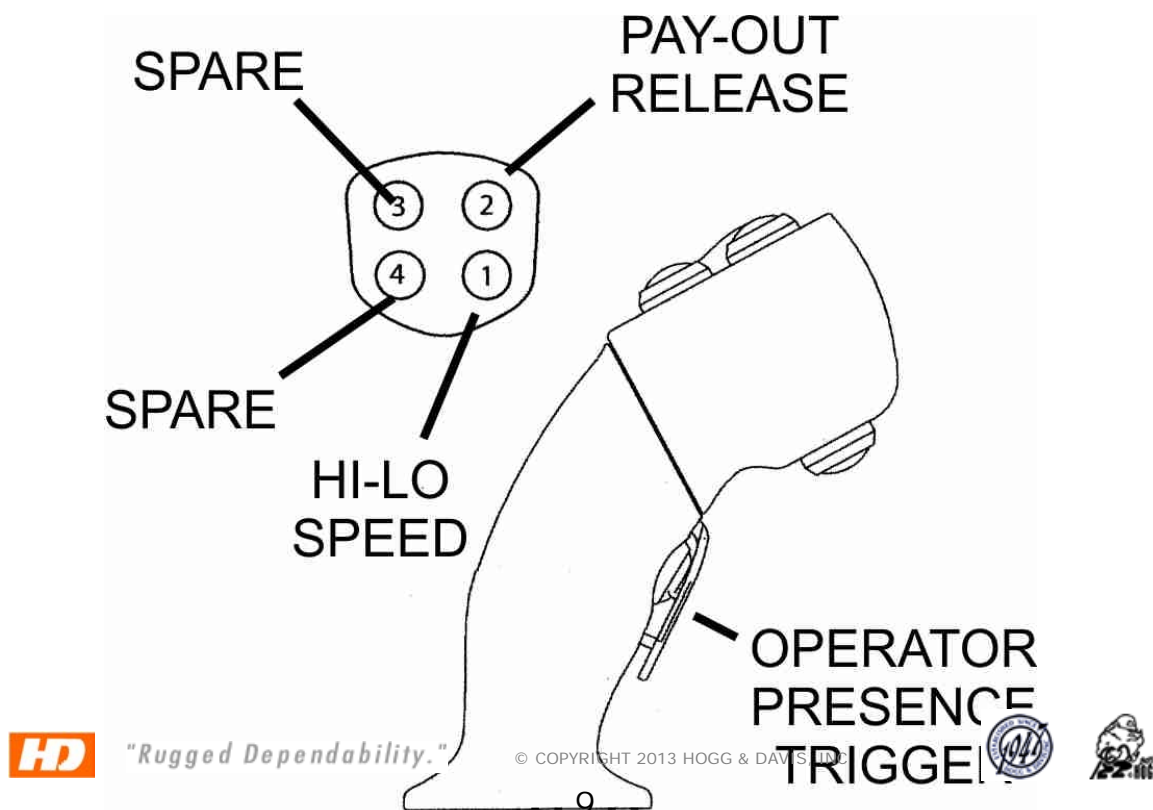


1. Over spin Brake Pressure. This gauge displays the pressure at which the Over spin Brake is operating. **DO NOT EXCEED 600 PSI.**
2. Sensor Heat. In cold conditions, it may be necessary to heat the pulling sensor for a few minutes prior to operation

ODP 100PPS TM 10,000 Lb Drum Puller

3. Over spin Brake. This controls the over spin brake and at what pressure you apply. Clockwise to apply and counter clockwise to release. **DO NOT OPERATE PULLER WITH BRAKE APPLIED.** Damage to the brake caliper and rotor may occur as well as providing false pressure readings.
4. Level wind control.
5. Drive dog ENGAGE / DISENGAGE SWITCHES **DO NOT OPERATE UNIT WITHOUT BOTH DRIVES ENGAGED OR DISENGAGED AT THE SAME TIME**
6. Joystick. This joystick is a friction style control. It has a positive stop but releasing control will NOT return control to neutral. In order to stop pull, operator must return joystick to neutral.

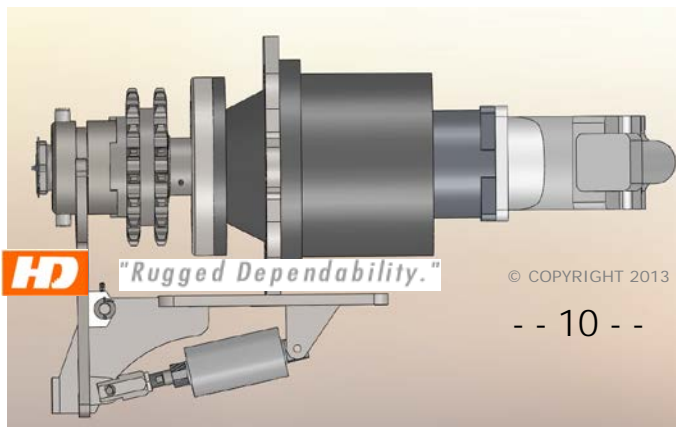
Joystick Functions



ODP 100PPS TM 10,000 Lb Drum Puller

- Pay Out Release. This button must be pressed while attempting to pay out under power. By pressing the Operator Presence Trigger while pressing the Pay Out Release, moving the Joystick towards the Pay Out position will allow the reel to pay out under power. Once the reel begins to pay out, these buttons may be released. The Pay Out Lockout will automatically reset when the Joystick is returned to neutral.
- Hi-Lo Speed. Pressing this button during take up or payout will manually shift the pull speed. Although the computer is still in control of the maximum line speed and line pull and it will not be exceeded.
- Operator Presence Trigger. This but be pressed during the beginning of all Joystick functions. Once the unit is working, it may be released. The trigger will reset when the Joystick is returned to neutral.

Warning: These functions are present to protect the operator and the crews on the ground. If any of these are not functioning properly, contact vendor immediately. These are not to be circumvented in any way. Creating shortcuts to control machines of this nature can cause SERIOUS INJURY or DEATH to those operating this machine and those that are working with it.



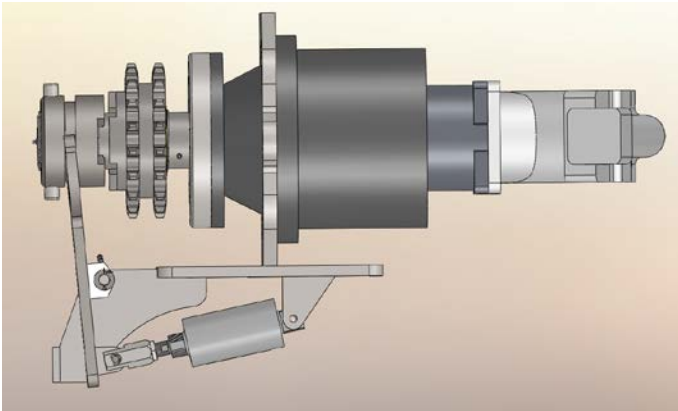
© COPYRIGHT 2013 HOGG & DAVIS, INC

-- 10 --

Engage



ODP 100PPS TM 10,000 Lb Drum Puller



Disengaged

Drive Engagement

Above is a top view of the drive dog couplers in their engaged and disengaged state. Please be sure all clutch pins are installed when engaged and disengaged, or damage may occur.

ODP 100PPS TM 10,000 Lb Drum Puller

Setup on the Job

Setup of the unit

Hogg & Davis, Inc. recommends following the methods described in the following publications:

IEEE Std 524-1992

IEEE Guide to the Installation of Overhead Transmission Line Conductors

IEEE Std 542a-1993

IEEE Guide to Grounding During the Installation of Overhead Transmission Line Conductors

Position of unit

Position the unit with the centerline of the trailer in line with the pull. Place the unit at a minimum of two times the height of the first block. Positioning the unit this way decreases the stress on the level wind system.

Tie Down/ Brake/ Chock

Chock all wheels and set brakes (if applicable). It should be noted that the fully loaded puller weight may exceed the tension desired during the pull. As the pull progresses, the weight of the puller may increase or decrease, therefore proper securing procedures should be followed during operation.



"Rugged Dependability."

© COPYRIGHT 2013 HOGG & DAVIS, INC



ODP 100PPS TM 10,000 Lb Drum Puller

Rope Payout Procedure (Free Wheel)

When beginning the rope payout feature, be sure that the engine is turned off. Ensure that all tension is removed from the pulling rope before attempting to release drive dogs.

Adjust reel brake to provide tension to the reel of rope. Disengage the drive dog(s) from the sprocket drive(s). Begin to pull rope through the blocks while continuing to adjust the over spin brake. When the rope install is completed, engage the sprocket drive(s).

******These instructions assume that the operator has set the proper drive dog(s) for the reel to be pulled in.***

Pulling Computer

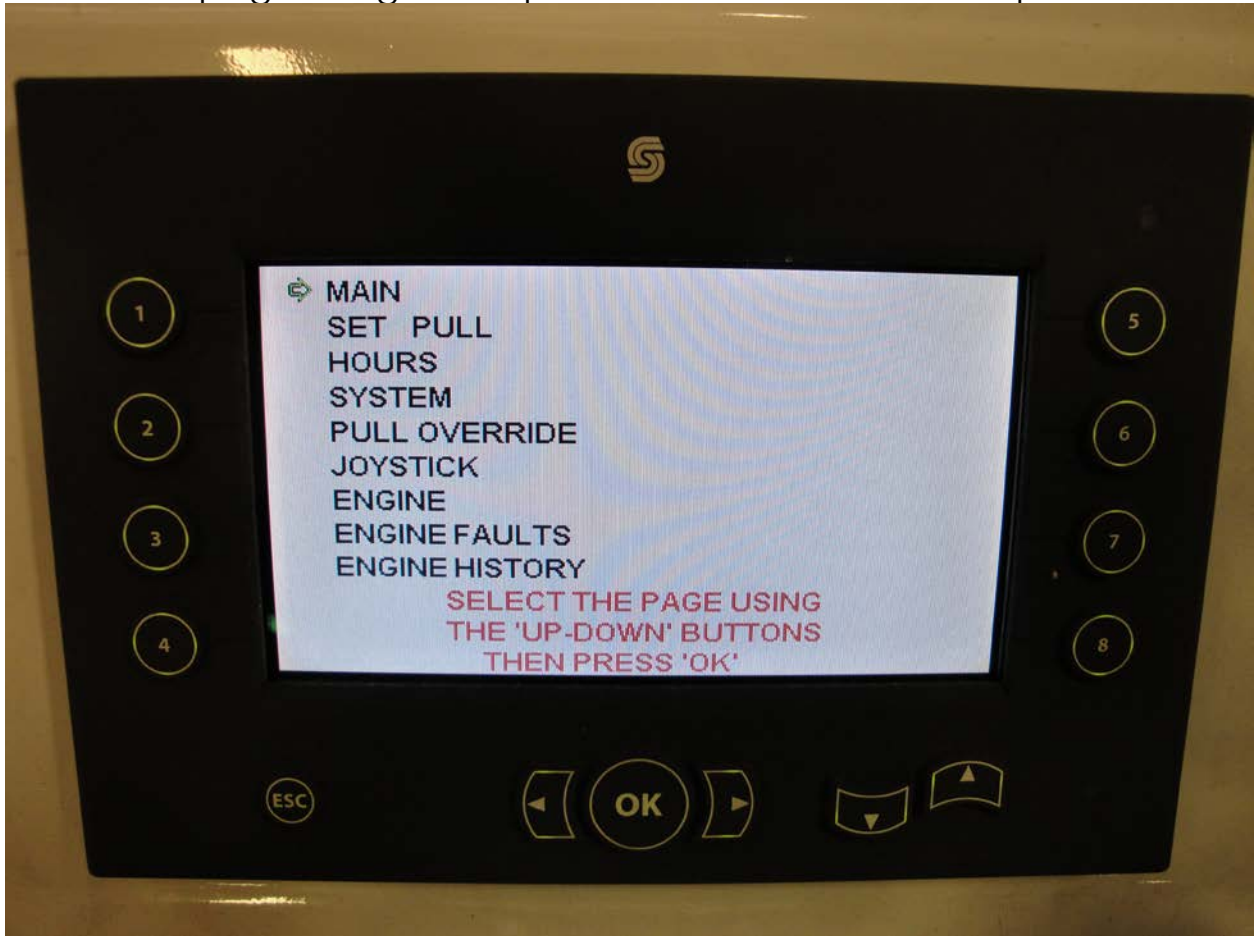
This unit is equipped with a computer control that allows the operator to preset the Maximum Line Pull as well as the Maximum Line Speed. During the pull, no matter the length of cable in the air, the computer calculates the drum diameter and adjusts the hydraulic system to provide a constant pulling control. Throughout the pull, the Line Pull and the Line Speed will be maintained at a constant set by the operator. This type of system allows for greater control of the overall pull, as well as eliminating the "estimation process" and constant adjustment of hydraulic system to maintain the maximum preset.

ODP 100PPS TM 10,000 Lb Drum Puller

Operation

Setup Screen.

Select the page using the "up-down" buttons and then press enter.



ODP 100PPS TM 10,000 Lb Drum Puller

Set Pull

There can be up to four preset "Pulls" in the computer at one time. They are labeled, Pull 1-4 and utilize the corresponding buttons on the left hand side of the pulling computer control.

Select the pull you wish to modify and increase the Maximum Pull by using the "up-down" buttons. When the desired Line Pull Max is set, press enter.

The computer can also control the line speed for that set pull. The buttons on the right side of the pulling computer 5-8 correspond with the pulls set 1-4. Pressing the 5-8 buttons will allow the operator to set the maximum Line Speed for the pull. FPM and MPH are both displayed. They are set relevant to the other. Example 352 FPM = 4.0 MPH.

When the Maximum Line Pull and Line Speed are set, press the ESC key and return to Pull Screen.

Pull Screen - MAIN

The pull screen displays the most needed displays for the pull.

- Pull – This displays the Current Line Pull in lbs. NOT THE MAXIMUM
- Fuel – Fuel Level in the Puller tank.
- Drum Diameter – Current diameter of the drum.
- FPM – Current FPM
- MPH – Current MPH
- Engine Gauges – This display's the engine temp, oil pressure, RPM PCT of Load and battery voltage.
- Throttle – The engine throttle is increased or decreased by using the Left-Right buttons on each side of the OK button.



"Rugged Dependability."

© COPYRIGHT 2013 HOGG & DAVIS, INC



ODP 100PPS TM 10,000 Lb Drum Puller

- Menu – Returns to the Main Menu Screen.
- Pull and Speed – Below the Menu label on the screen, the PRESET Maximum Line Pull and Speed are displayed.
- Select Pull – This button brings up the Select Pull Screen.
- Camera – If the unit is equipped, this will allow for remote viewing.



"Rugged Dependability."

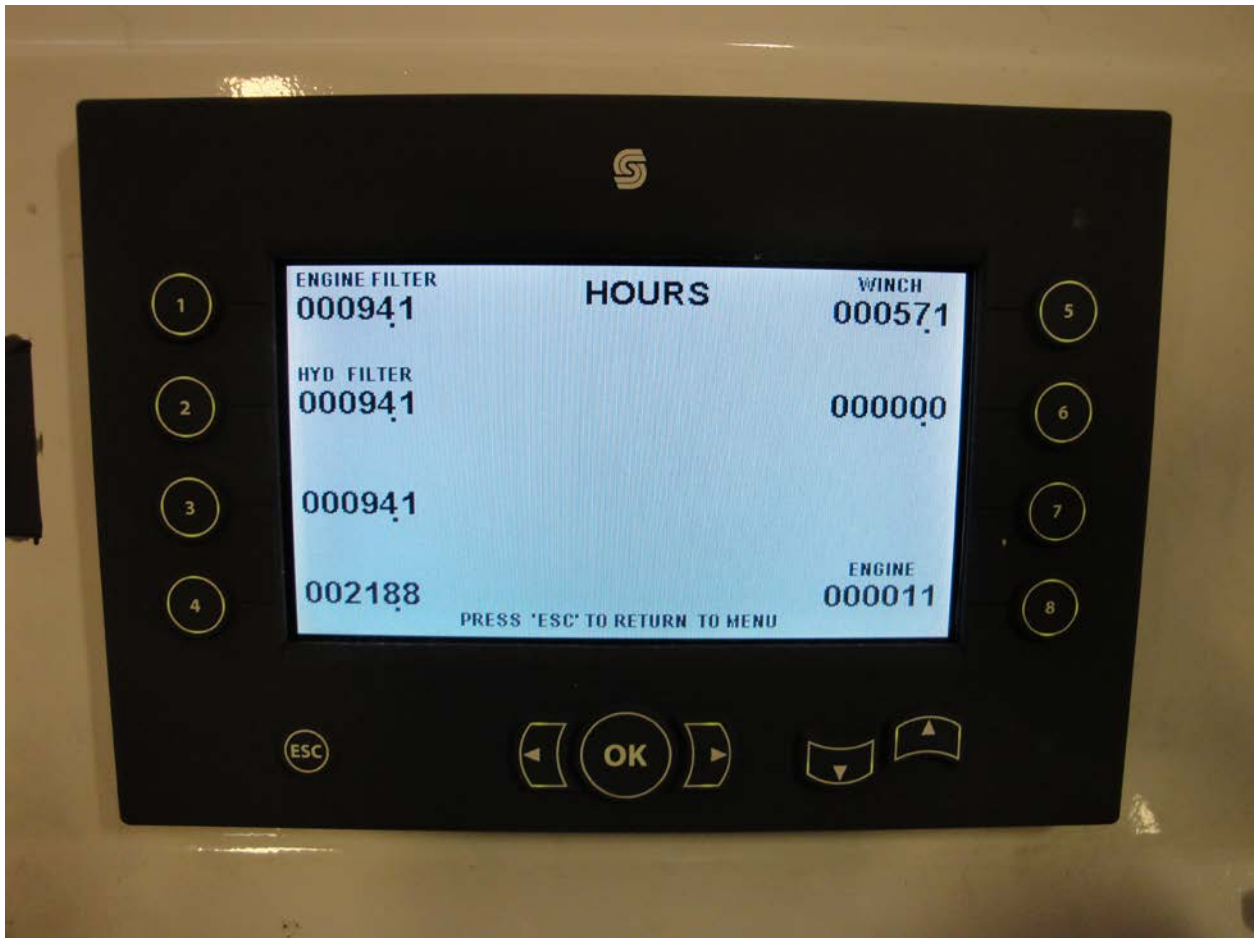
© COPYRIGHT 2013 HOGG & DAVIS, INC



ODP 100PPS TM 10,000 Lb Drum Puller

Hours Screen

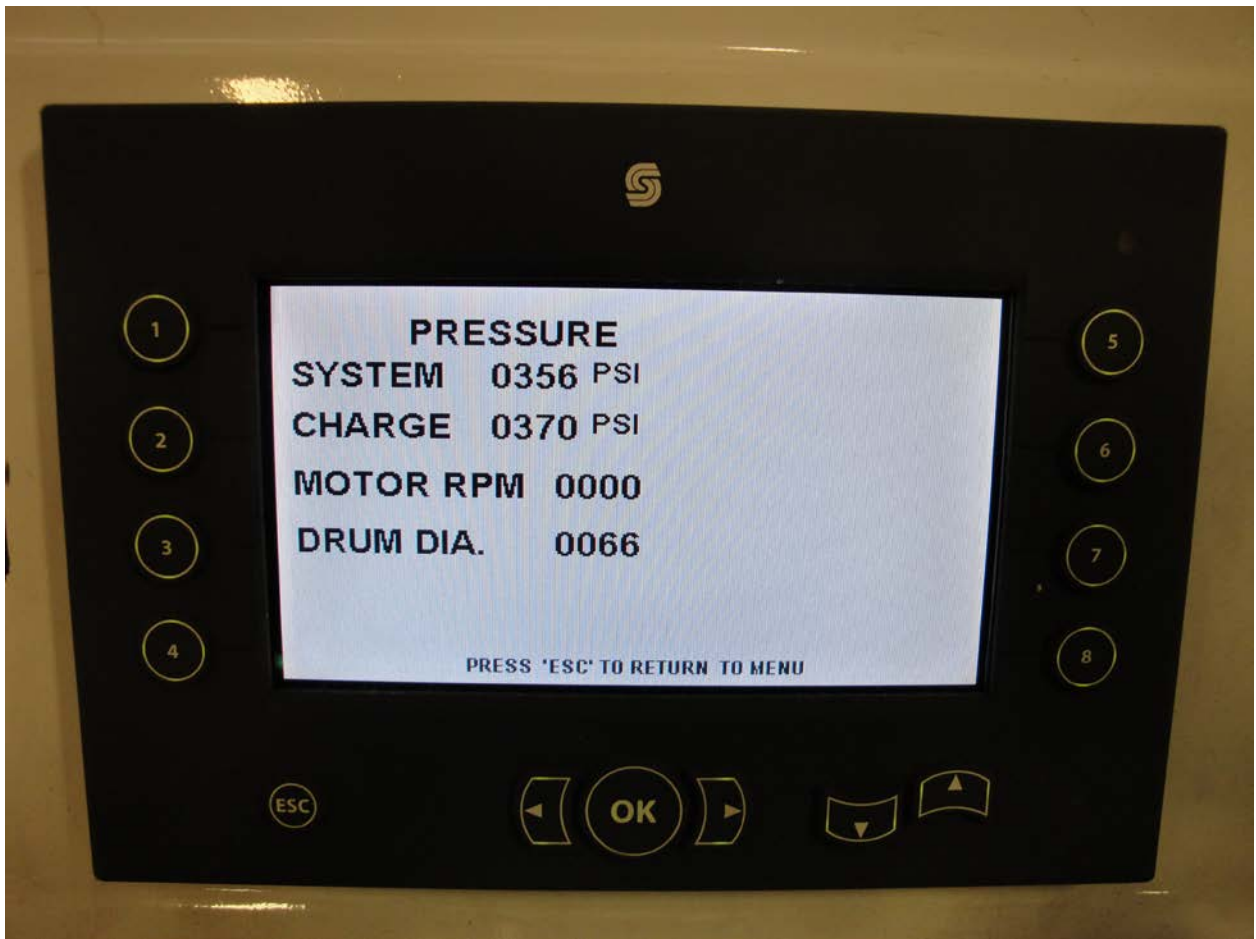
This screen displays the current hours on the engine oil filters, hydraulic oil filters, the time the winch has been activated (pay in and pay out time) and engine hours.



ODP 100PPS TM 10,000 Lb Drum Puller

System Screen

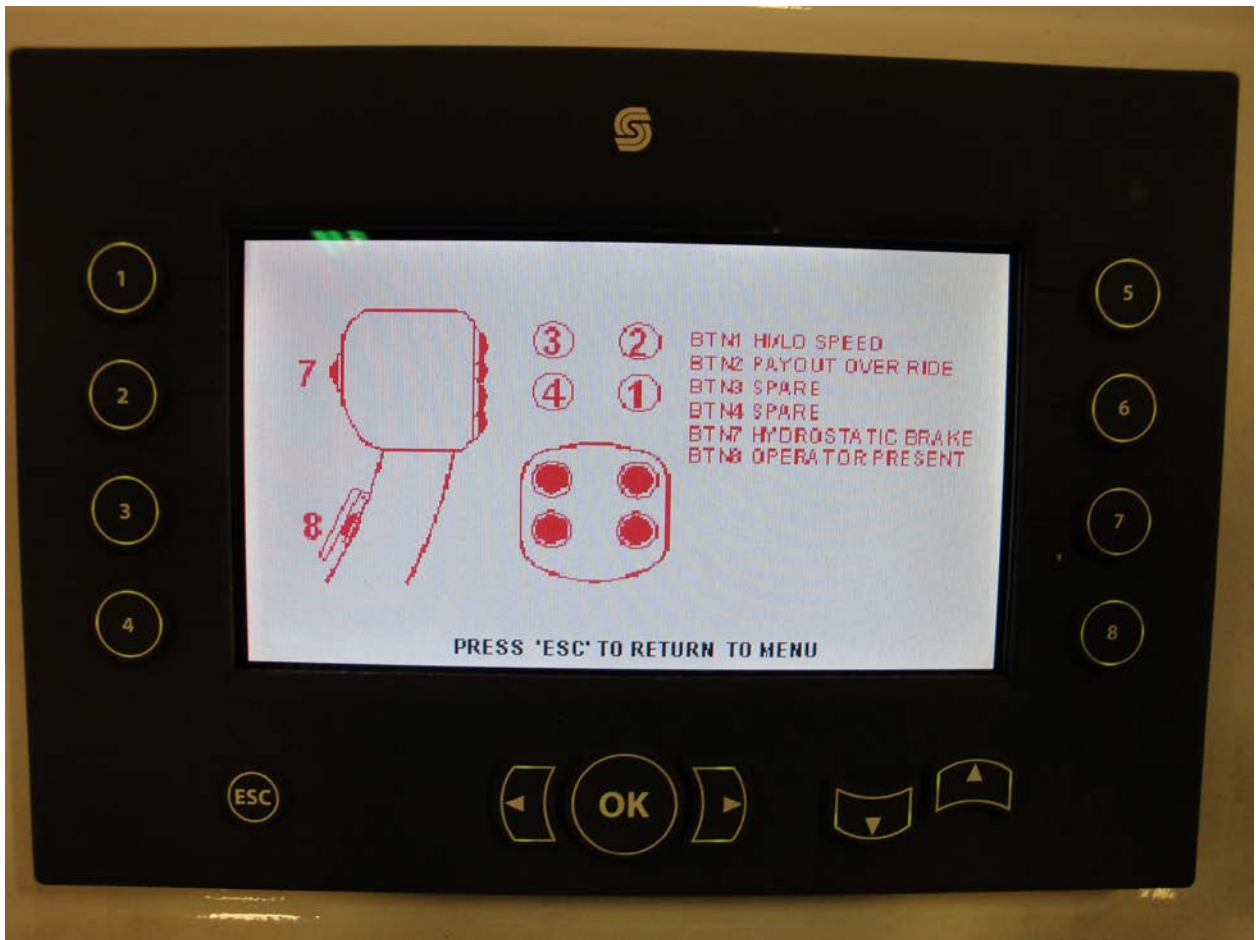
This screen displays the current System Pressure, Charge Pressure, Motor RPM, and the Drum Diameter. This screen is primarily used for troubleshooting.



ODP 100PPS TM 10,000 Lb Drum Puller

Joystick

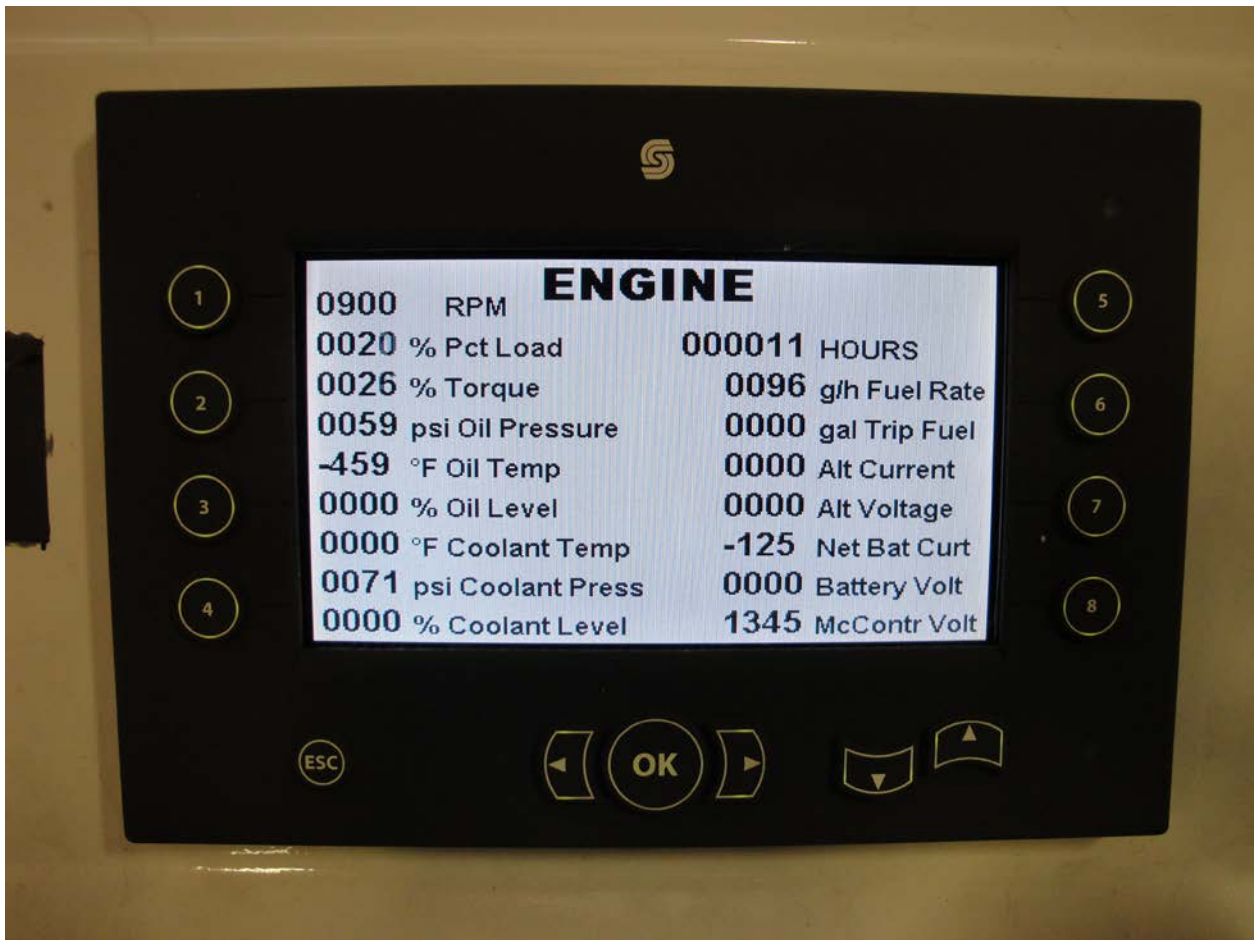
This screen gives a graphic display of the Joystick and its functions.



ODP 100PPS TM 10,000 Lb Drum Puller

Engine

This screen displays all current information regarding the engine on the puller.



*****These instructions assume that the operator has set the proper drive dog(s) for the reel to be pulled in.**

ODP 100PPS TM 10,000 Lb Drum Puller

Pulling Control

The Following instructions explain how to properly set up the unit.

1. Release the hydraulic over spin brake.
2. Set Job Pull Settings on the Pull Computer.
3. Return computer to Main Screen.
4. Increase Throttle to 1500 RPM or desired setting.
5. Squeeze trigger and move Joystick to take up.
6. Adjust line speed with joystick.
7. Return joystick to neutral to stop pull and set holding brake.

System Brakes

The internal braking system is spring applied / hydraulic release on the drive motors. When the joystick is in neutral, the brakes are automatically applied

Level wind

This unit is equipped with manual post style level wind. Operator must control during pull as needed for even take up of rope on reel.

LUBRICATION AND MAINTENANCE

This unit has no set PM schedule beyond that of the engine manufacturers suggested maintenance schedule. This unit should be visually inspected prior to each use while repairing any and all discrepancies prior to use.



ODP 100PPS TM 10,000 Lb Drum Puller

Items to be inspected prior to use are:

- Drive Chains and sprockets for wear and slack
- All welds and seams
- Loose or missing fasteners (bolts, nuts, set screws)
- Loose or leaking hydraulic hoses
- Damaged or worn hydraulic hoses
- Brake calipers (loose fittings, hoses, worn linings)
- Brake Pads (over spin brake)
- Brake rotors
- Tires and brakes
- Engine and hydraulic system fluid levels.
- Set screws (see set screw section)

Lubrication Schedule

- Drive chain and sprockets (daily)
- Reel Shaft Bearings (as needed)
- Reel Bearings (as needed)
- Engine oil as per manufacturers recommendation
- Axle Bearings (as needed)
- Level wind grease fittings (as needed)

Set Screws

Due to the rugged nature of this machine. All set screws on the shafts, reels and bearings have a thread locker and may be double set screwed. Please do not assume that screws are tight when performing maintenance. When checking or tightening these set screws, remove the first and then tighten the first.



"Rugged Dependability."

© COPYRIGHT 2013 HOGG & DAVIS, INC



ODP 100PPS TM 10,000 Lb Drum Puller

15-15 Warranty

Hogg and Davis, Inc. warrants its trailers against defects in material or workmanship for period of 15 months from the date of shipment from Hogg and Davis, Inc. (see General Conditions & Exceptions). Hogg and Davis, Inc. will replace, free of charge, F.O.B. Hogg and Davis, Inc. factory, such parts or parts thereof, that in their judgement have proven defective. Additionally, Hogg and Davis, Inc. will pay reasonable and customary labor charges when defective part is replaced, installed or repaired by a fully authorized Hogg and Davis, Inc. trailer dealer at his facility.

Warranty credit will be issued only upon receipt and inspection of defective parts of at the Hogg and Davis, Inc. factory.

Hogg and Davis, Inc. warrants its trailer main frame assemblies (except pintle eyes or other towing attachments, spindles and axles) against defects in material or workmanship for a period of **15 years** from the date of shipment from Hogg and Davis, Inc. (see General Conditions & Exceptions). Hogg and Davis, Inc. shall replace or repair, in a manner as it shall determine, free of charge, F.O.B. factory, any parts or parts thereof, that in its judgement have proven defective. Additionally, Hogg and Davis, Inc. will pay reasonable and customary labor charges when defective part is replaced, installed or repaired by a fully authorized Hogg and Davis, Inc. trailer dealer at his facility

General Conditions & Exceptions

All warranties, options and representations made herein shall apply only provide such equipment shall not have been subject to misuse, negligence or accident and has been operated in accordance with factory approved procedures. This warranty does not obligate Hogg and Davis, Inc. or its authorized dealers to bear the cost of parts obtained from or labor performed by unauthorized sources. Nor does it obligate Hogg and Davis, Inc. **or its** authorized dealers to bear the cost of transportation of parts or equipment for repair or **replacement purposes**. This warranty is in lieu of any other warranty, expressed **or implied**, or any other obligation or liability on the part of Hogg and Davis, Inc and no persons or entity is authorized to make any representation beyond those stated herein.

Hogg and Davis, Inc. shall not be held liable for consequential damage of any kind. Hogg and Davis, Inc. also reserves the right to make changes and improvements in its products without incurring any obligation to install any such changes or improvements upon its products previously manufactured.

The above warranty shall not be misconstrued to mean warranty of tires, clutch, transmission assemblies or customer requested accessory equipment other than the warranty extended by their respective manufactures to Hogg and Davis, Inc. In addition, friction, drive rollers are warranted only to extent of bonding failure. All warranties, options and representations made herein are applicable to the original end-user of the product and are not sellable or transferable in any manner.



"Rugged Dependability."

© COPYRIGHT 2013 HOGG & DAVIS, INC



ODP 100PPS TM 10,000 Lb Drum Puller

Parts and other manufacturer manuals

The Following drawings are for part identification only. Please reference the unit V.I.N. number and the corresponding part number when ordering.

The information, specifications, and illustrations in this manual are on the basis of information available at the time it was written. The specifications, torque values, pressures of operation, measurements, adjustments, illustrations, and other items can change at any time. These changes can affect the service of the given product.

For the complete and most current information, contact:

Hogg & Davis, Inc
P.O. Box 405 / 3800 Eagle Loop
Odell, OR 97044-0405
541-354-1001
541-354-1080 Fax
www.hoggdavis.com

NOTES:



© COPYRIGHT 2013 HOGG & DAVIS, INC



Parts Manual



The information, specifications, and illustrations in this manual are on the basis of information available at the time it was written. The specifications, torque values, pressures of operation, measurements, adjustments, illustrations, and other items can change at any time. These changes can affect the service of the given product.

For the complete and most current information, contact:

Hogg & Davis, Inc
P.O. Box 405 / 3800 Eagle Loop
Odell, OR 97044-0405
541-354-1001
541-354-1080 Fax

For most recent manual
version please visit:
www.hoggdavis.com



"Rugged Dependability."

© COPYRIGHT 2013 HOGG & DAVIS, INC

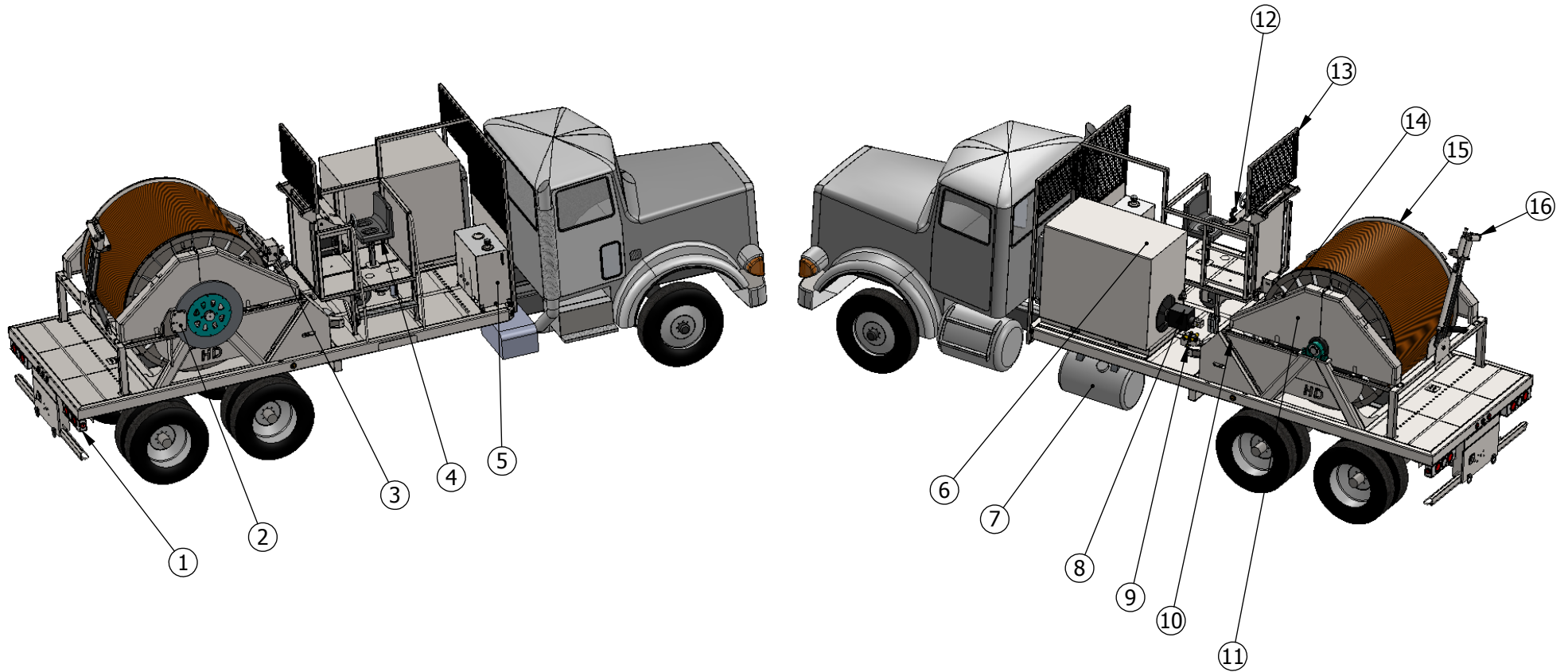


ver. 1.0

Table of Contents

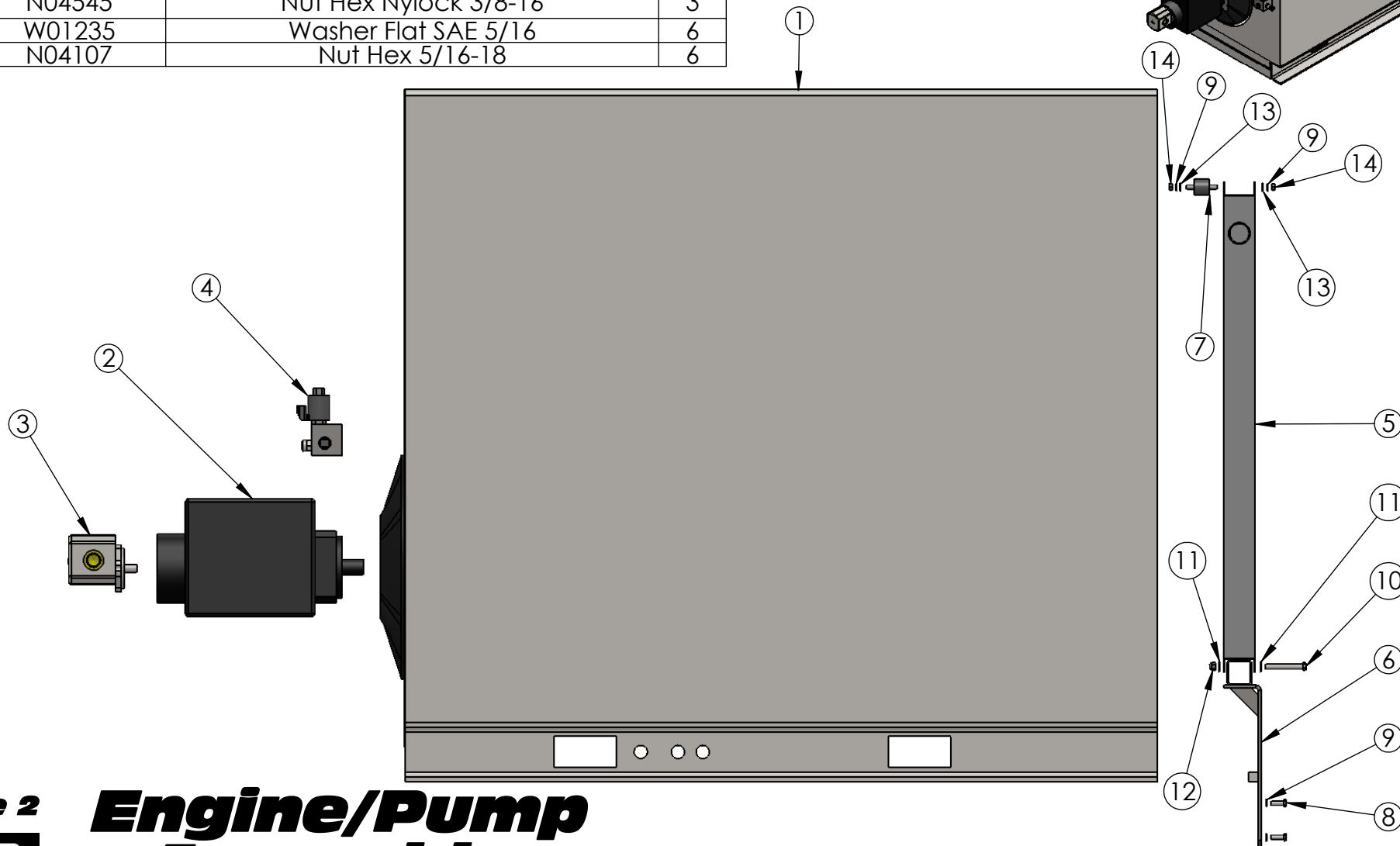
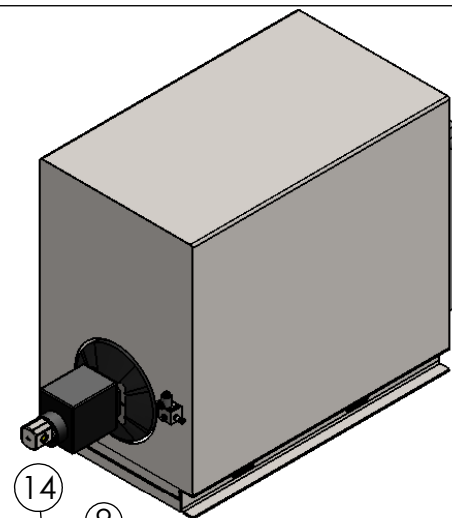
Isometric View	1
Engine Assembly	2
Left Hand Planetary Drive	3
Right Hand Planetary Drive	4
Operator Controls	5
HD Brake Cylinder	6
Sensor Box	7
Reel Assembly	8
Levelwind Assembly	9
Levelwind Manifold	10
Reel Brake	11
Air Components	12
Hydraulic Tank Assembly	13
Operator Seat	14
Light Package	15
Chain Guards	16
Wiring Schematics	17
Hydraulic Schematics	22



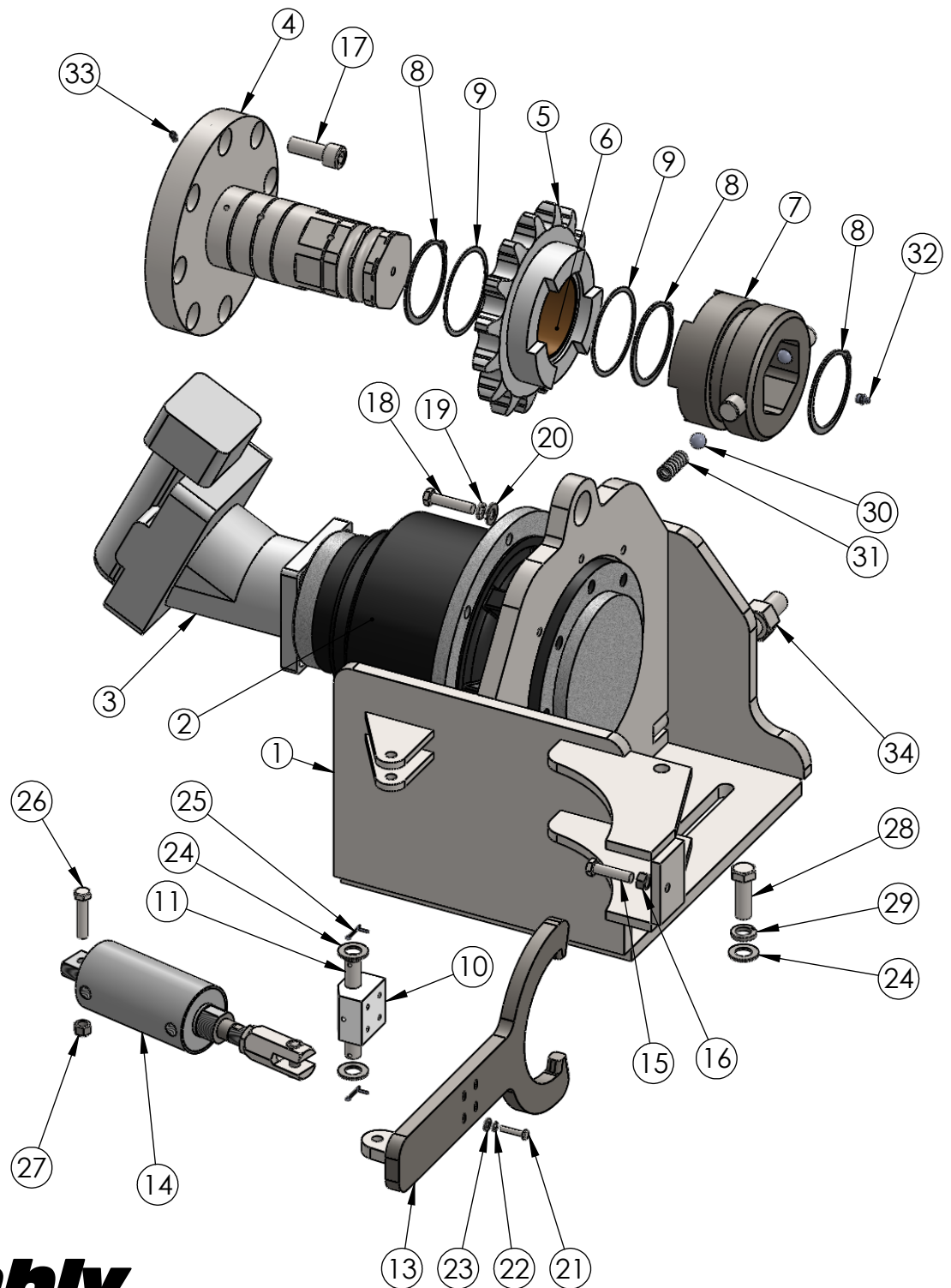


ITEM NO.	PART NUMBER	DESCRIPTION	QTY.
1	ODP100PPST Lights	See LED Light Package Assembly	1
2	ODP100PPST Caliper assembly	See Caliper Assembly	1
3	ODP100PPST Sensor box	See Sensor Box Assembly	1
4	ODP100PPST Seat assembly	See Seat Assembly	1
5	ODP100PPST Tank assembly	See Tank Assembly	1
6	ODP100PPST Engine assembly	See Engine Assembly	1
7	T01055	Tank, 60gal	1
8	ODP100PPST Air System	See Air System Assembly	1
9	ODP100PPST Levelwind Manifold	See Levelwind Manifold Assembly	1
10	ODP100PPST Left-hand Drive	See Drive Assembly	1
11	ODP100PPST Chain Guards	See Chain Guard Assembly	1
12	ODP100PPST Controls	See Control Assembly	1
13	ODP100PPST Screen	See Screen Assembly	1
14	ODP100PPST Right-hand Drive	See Drive Assembly	1
15	ODP100PPST Reel assy	See Reel Assembly	1
16	ODP100PPST Levelwind	See Levelwind Assembly	1

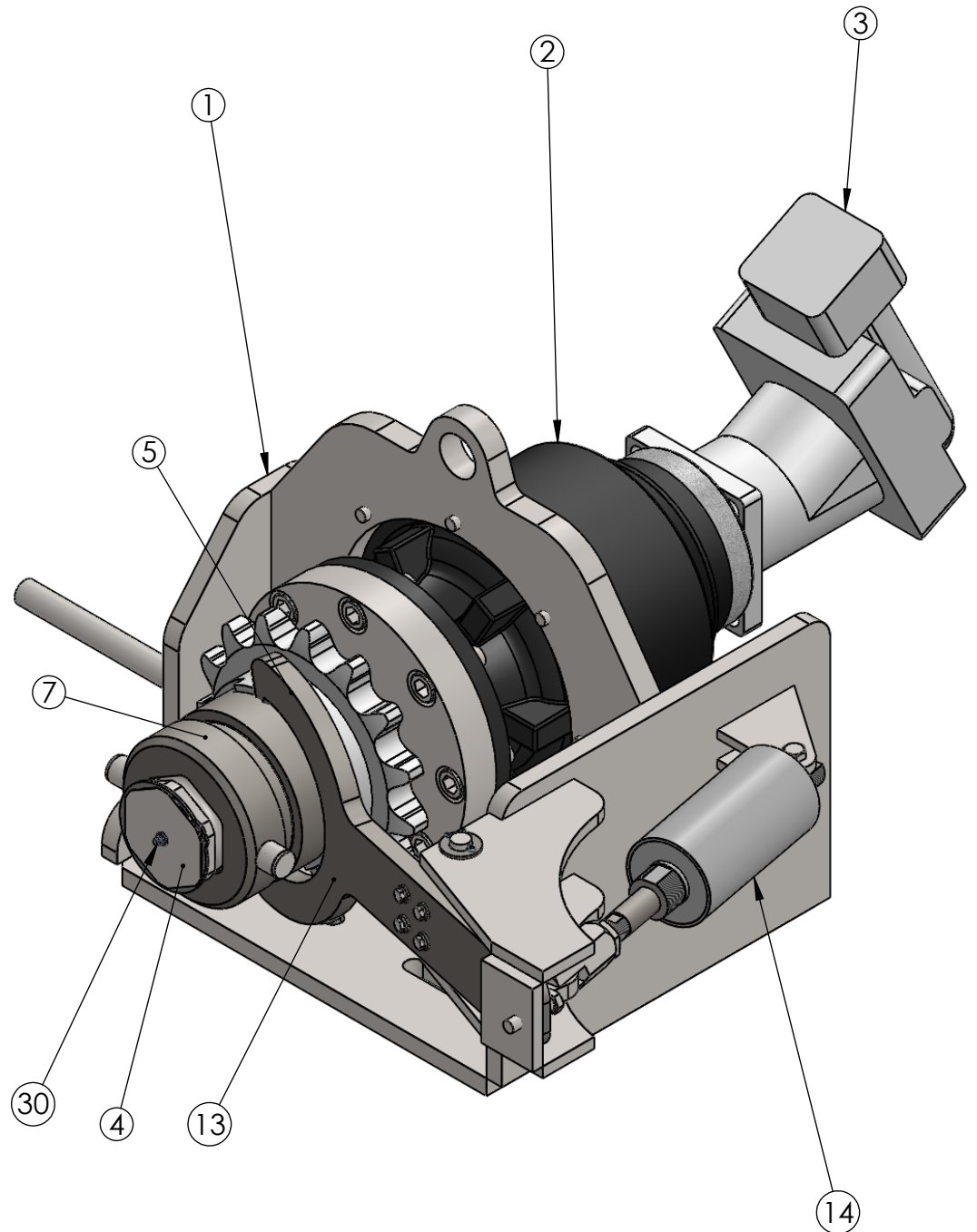
ITEM	PART NUMBER	DESCRIPTION	QTY.
1	E02085	John Deere 185 HP engine	1
2	P20007	Pump, Sauer 90R100	1
3	P20103	Pump, 10gpm	1
4	M04062	Manifold, Pressure Control	1
5	C35120	MA-120 oil cooler	1
6	B15020	Bracket, Oil Cooler	1
7	I04004	1-1/4" isolator	3
8	B11020	Bolt Hx head 5/16-18x1	4
9	W01048	Washer, Split Lock 5/16"	10
10	B11015	Bolt Hx head 3/8-16x3	3
11	W01002	Washer Flat SAE 3/8	6
12	N04545	Nut Hex Nylock 3/8-16	3
13	W01235	Washer Flat SAE 5/16	6
14	N04107	Nut Hex 5/16-18	6

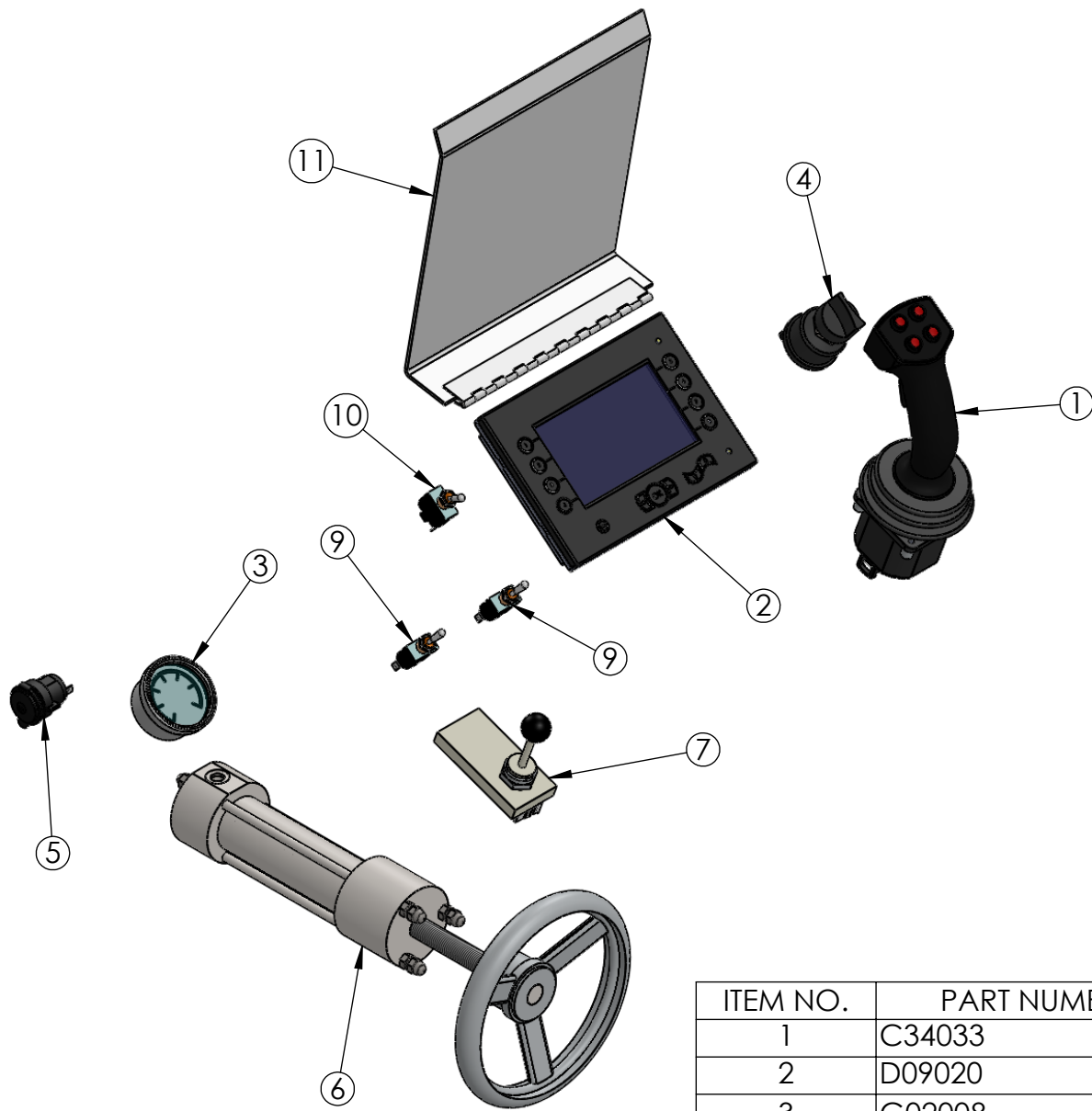


ITEM	PART NUMBER	DESCRIPTION	QTY.
1	M09045	Mount, Drive LH	1
2	G12008	Auburn Planetary	1
3	M08100	Motor	1
4	S42999	Shaft ODP100-3	1
5	S29165	160B15	1
6	B21018	Bushing, Bronze, 4" x 4-3/4" x 2-1/8"	1
7	H09024	Hub, Hex Drive w/ Detent	1
8	R18014	Ring, Snap External	3
9	W01014	Washer, Thrust	2
10	P25010	Pivot, Clutch ODP	1
11	P25011	Pin, Pivot	1
12	S24041	Spacer, Pivot bracket ODP100-3	1
13	Y01071	Yoke, Clutch Shift ODP100-3	1
14	C32063	AIR CYLINDER	1
15	B11366	Bolt Hx head 1/2-13x2	1
16	N04264	Nut Hex 1/2-13	1
17	S04249	Screw SHCS 3/4-16x2	8
18	B11451	Bolt Hx head 1/2-13x2-1/4 Z8	8
19	W01565	Washer, Split Lock 1/2"	8
20	W01005	Washer Flat SAE 1/2"	8
21	B11325	Bolt Hx head 1/4-20x1-1/4	4
22	W01525	Washer Split Lock 1/4	4
23	W01205	Washer Flat SAE 1/4	4
24	W01285	Washer Flat SAE 3/4	6
25	P06935	Pin, Cotter 1/8x1-1/4 Z	2
26	B11361	Bolt Hx head 1/2-13x2-1/4	1
27	N04555	Nut, Hex Nylock® 1/2-13	1
28	B11460	Bolt Hx head 3/4-16x2-1/4 Z8	4
29	W01585	Washer Split Lock 3/4	4
30	B01180	Ball, Detent 3/4" ODP	2
31	S28036	Spring, Detent OPD	2
32	F05629	Grease Zerk 1/8NPT	1
33	F05630	Fitting, 1/4-28 Zerk	2
34	N04267	Nut, 1-8 Z	2

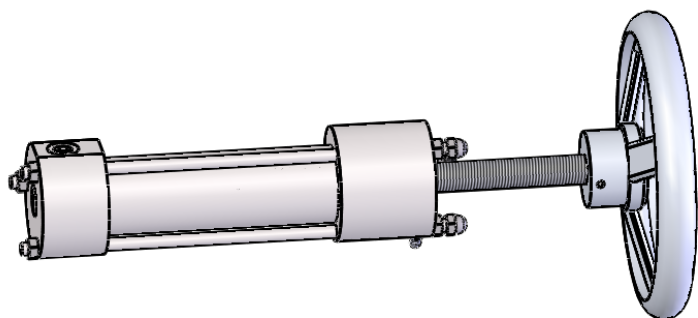
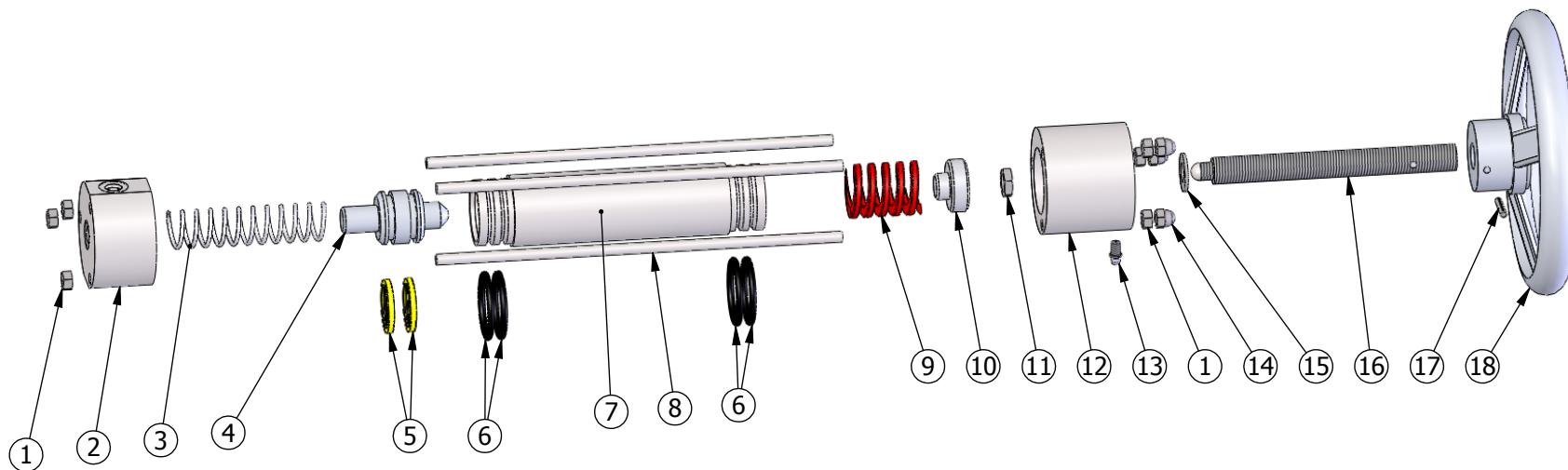


ITEM	PART NUMBER	DESCRIPTION	QTY.
1	M09044	Mount, Drive RH	1
2	G12008	Auburn Planetary	1
3	M08100	Motor	1
4	S42999	Shaft ODP100-3	1
5	S29165	160B15	1
6	B21018	Bushing, Bronze, 4" x 4-3/4" x 2-1/8"	1
7	H09024	Hub, Hex Drive w/ Detent	1
8	R18014	Ring, Snap External	3
9	W01014	Washer, Thrust	2
10	P25010	Pivot, Clutch ODP	1
11	P25011	Pin, Pivot	1
12	S24041	Spacer, Pivot bracket ODP100-3	1
13	Y01071	Yoke, Clutch Shift ODP100-3	1
14	C32063	AIR CYLINDER	1
15	B11366	Bolt Hx head 1/2-13x2	1
16	N04264	Nut Hex 1/2-13	1
17	S04249	Screw SHCS 3/4-16x2	8
18	B11451	Bolt Hx head 1/2-13x2-1/4 Z8	8
19	W01565	Washer, Split Lock 1/2"	8
20	W01005	Washer Flat SAE 1/2"	8
21	W01285	Washer Flat SAE 3/4	6
22	P06935	Pin, Cotter 1/8x1-1/4 Z	2
23	B11325	Bolt Hx head 1/4-20x1-1/4	4
24	W01525	Washer Split Lock 1/4	4
25	W01205	Washer Flat SAE 1/4	4
26	B11460	Bolt Hx head 3/4-16x2-1/4 Z8	4
27	W01585	Washer Split Lock 3/4	4
28	B11361	Bolt Hx head 1/2-13x2-1/4	1
29	N04555	Nut, Hex Nylock® 1/2-13	1
30	F05629	Grease Zerk 1/8NPT	1
31	F05630	Fitting, 1/4-28 Zerk	2
32	B01180	Ball, Detent 3/4" ODP	2
33	S28036	Spring, Detent OPD	2



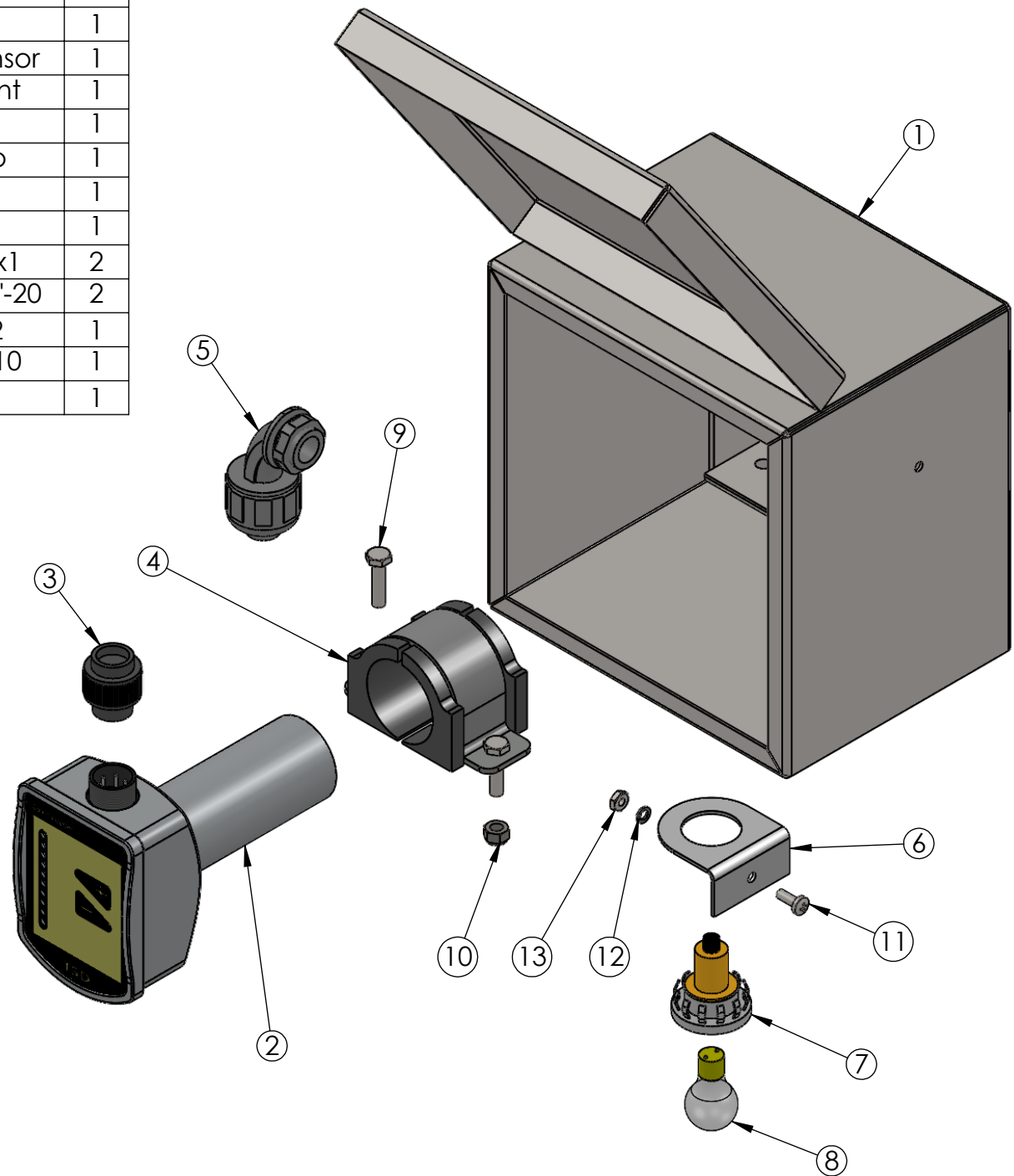


ITEM NO.	PART NUMBER	DESCRIPTION	QTY.
1	C34033	JS6000 +1 Joystick Controller	1
2	D09020	Display, Color DP600 TFT	1
3	G02008	3" 600PSI GAUGE	1
4	S40070	Switch, Key Cole Hersee	1
5	S21020	12v Socket	1
6	C32004	Brake Cylinder	1
7	C34042	Controller, Levelwind Joystick	1
8	B22031	Block, Contact	2
9	S40008	Switch, SP/DT Maintained	2
10	S40035	Switch, SP/ST Toggle	1
11	C29026	Cover, Display	1

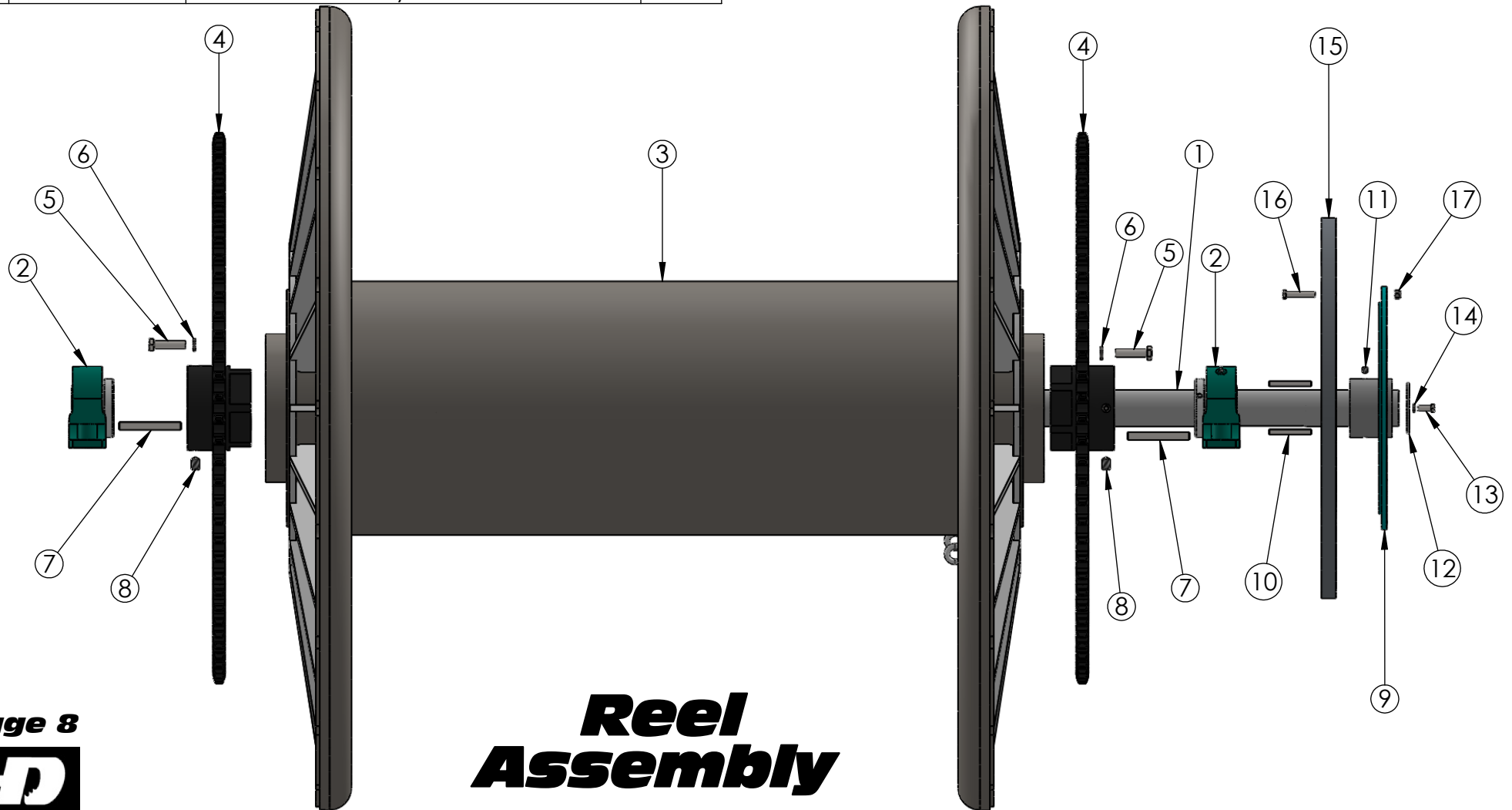


ITEM NO.	PART NUMBER	DESCRIPTION	QTY.
1	N04107	Nut Hex 5/16"-18	6
2	C06009	Bar round 3" 1018	1
3	S28022	Return Spring	1
4	P08017	Piston, Aluminum two groove	1
5	O01061	Seal	2
6	O01060	O-Ring	4
7	H08003	Cylinder Tube	1
8	R19007	Bar round 5/16" 1018	3
9	S28021	Spring	1
10	P08016	2" Aluminum RB	1
11	N04039	Nut Hex Jam 1/2-20	1
12	C06012	Bar round 3" 1018	1
13	F05630	Fitting, 1/4"-28 Zerk	1
14	N04103	Nut Hex 5/16"-18 Acorn	3
15	W01005	Washer, Flat SAE 1/2"	1
16	S04006-001	Bar 3/4"-8 acme thread	1
17	P06186	Pin, Roll 3/16 "x 1"	1
18	H02060	Handle, 8" Dia.	1

ITEM	PART NUMBER	DESCRIPTION	QTY.
1	B13105	Box, Sonic Sensor	1
2	S06020	Sensor, Ultrasonic	1
3	K02064	Kit, Connector US Sensor	1
4	C14036	Clamp, Sensor Mount	1
5	C26165	Liquidtite 90	1
6	B15272	Bracket, heat lamp	1
7	S21021	Llght, socket 1157	1
8	L04021	Light, bulb 1157	1
9	B11324	Bolt Hx head 1/4-20x1	2
10	N04523	Nut, Hex Nylock® 1/4"-20	2
11	S04620	Screw, #10-32 x 1/2	1
12	W01505	Washer Split Lock #10	1
13	N04203	Nut Hex 10-32	1

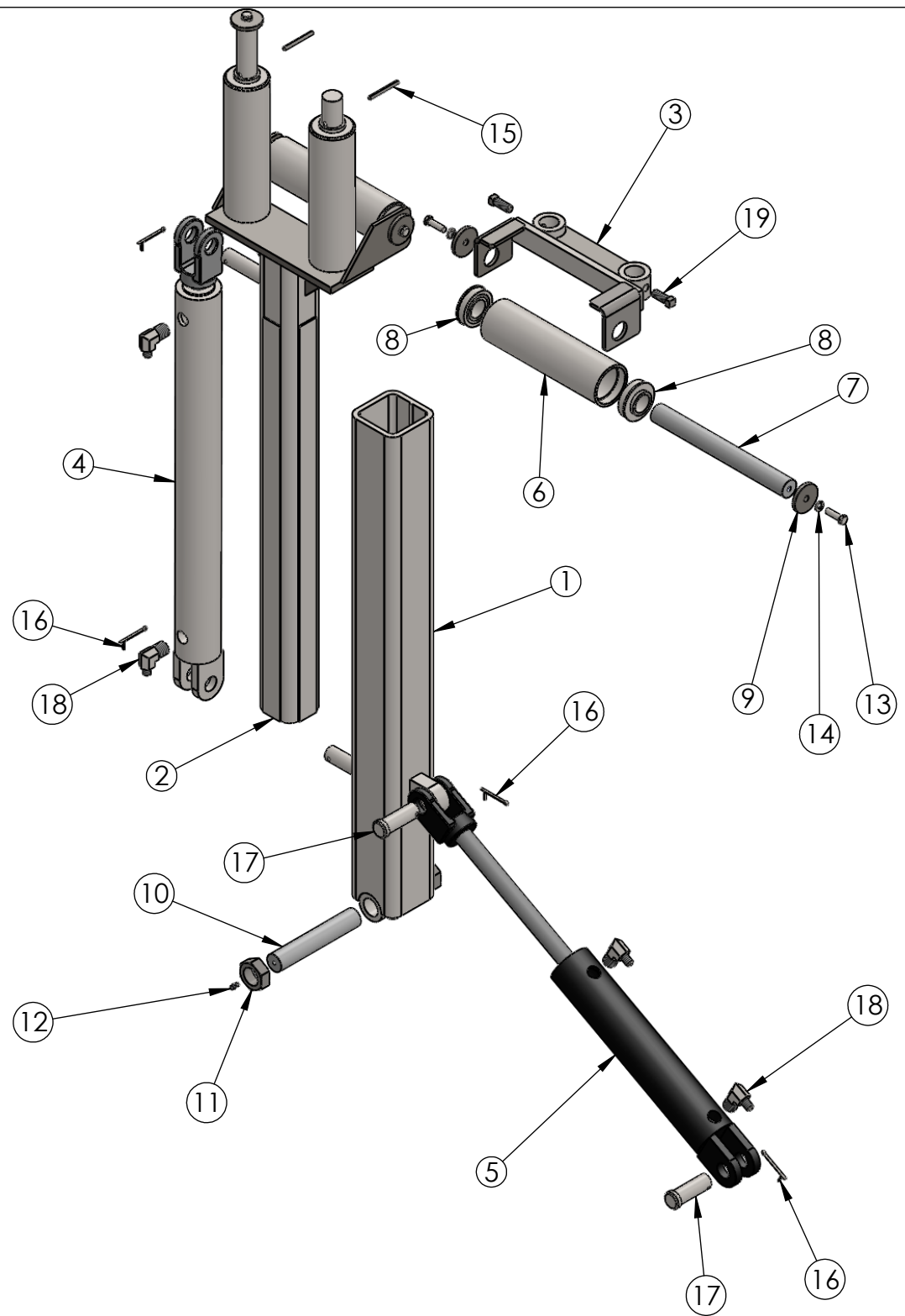


ITEM	PART NUMBER	DESCRIPTION	QTY.
1	S43051	3 7/16" STRESS PROOF	1
2	B07406	3 7/16" PILLOW BLOCK	2
3	R07021	ODP100 Reel	1
4	S29071	Sprocket 160C80 machined	2
5	B11465	Bolt Hx head 3/4-10x3 Z8	12
6	W01585	Washer Split Lock 3/4	12
7	K01022	Key, Drive ODP100	4
8	S04054	Screw, Set 3/4-10x1 CP	6
9	H09114	36" BRAKE DISC HUB-20K SWOOSH	1
10	K01021	Key, Brake Hub ODP100	2
11	S04261	Screw, Set 1/2-13x1/2 CP	2
12	C06963	1/4" A36 Plate	1
13	B11363	Bolt Hx head 1/2-13x1-1/4	1
14	W01565	Washer, Split Lock 1/2"	1
15	D02051	1 1/2" 1045 High Carbon Steel	1
16	B11135	Bolt Hx head 1/2-13x2-3/4	8
17	N04555	Nut, Hex Nylock® 1/2-13	8

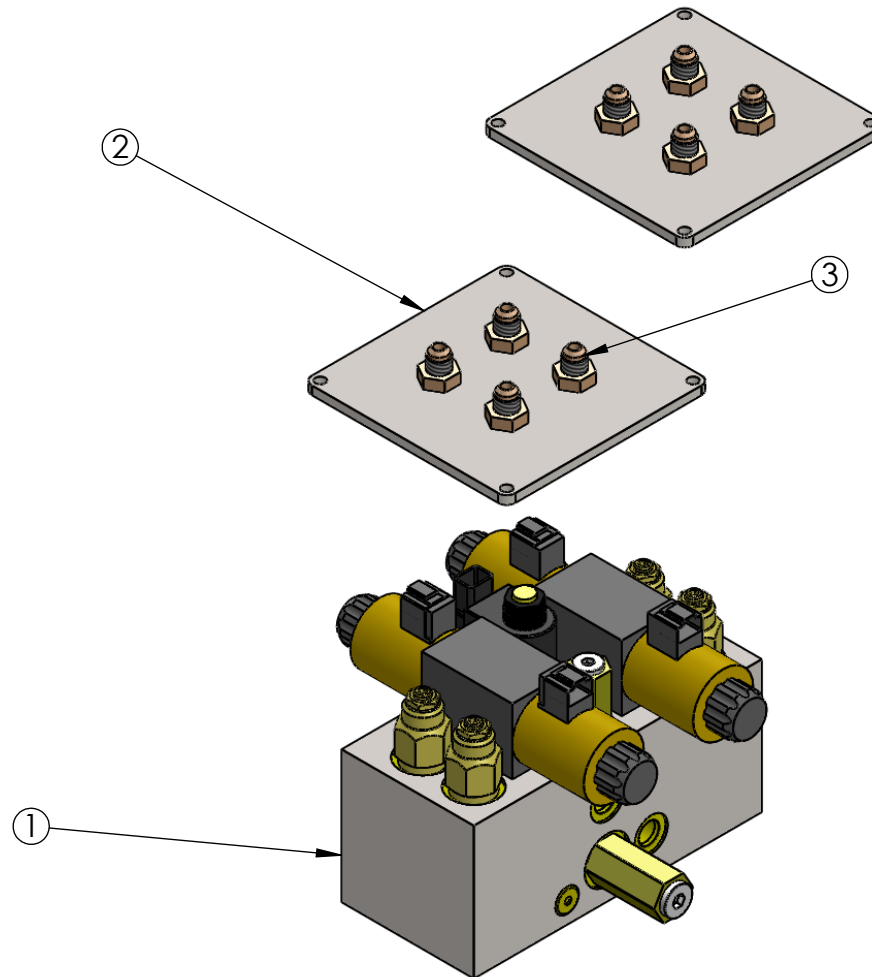


Reel Assembly

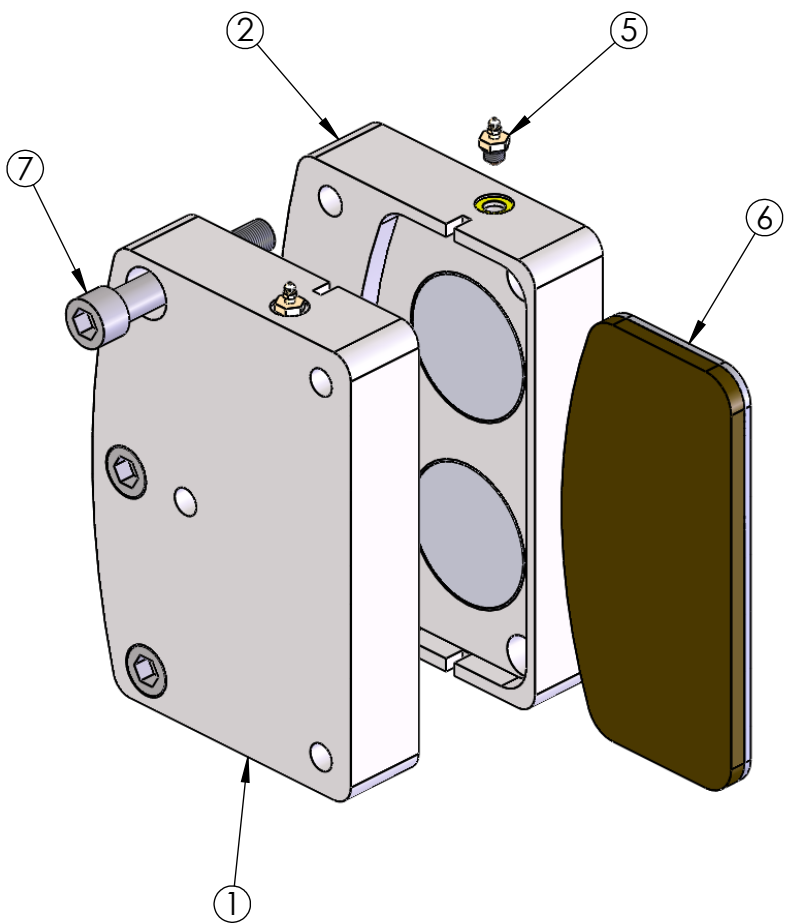
ITEM	PART NUMBER	DESCRIPTION	QTY.
1	S17008	Sleeve, Levelwind Extending	1
2	A08094	Arm, Levelwind Extending	1
3	B15897	Bracket, Swing-away Fairlead	1
4	C32072	Cylinder, Levelwind Extend	1
5	C32020	Cylinder, Levelwind	1
6	R20044	Roller, Painted Steel	4
7	S43129	Shaft, Roller	2
8	B07110	Bearing, Roller	8
9	C06041	Cap, End	5
10	P06156	Pin, Levelwind Pivot	1
11	N04097	Nut Hex Jam 1-1/4-12	2
12	F05630	Fitting, 1/4-28 Zerk	1
13	B11343	Bolt Hx head 3/8-16x1-1/4	5
14	W01545	Washer, Split Lock 3/8"	5
15	P06193	Pin, Roll 1/4 x 2-1/2	2
16	P06948	Pin, Cotter 3/16x2 Z	4
17	P06073	Pin, 1x2-3/4	2
18	F05360	Fitting, 6-8 90° NPT	4
19	S04157	Screw, Set Sq Head 1/2 x 1-1/4	2



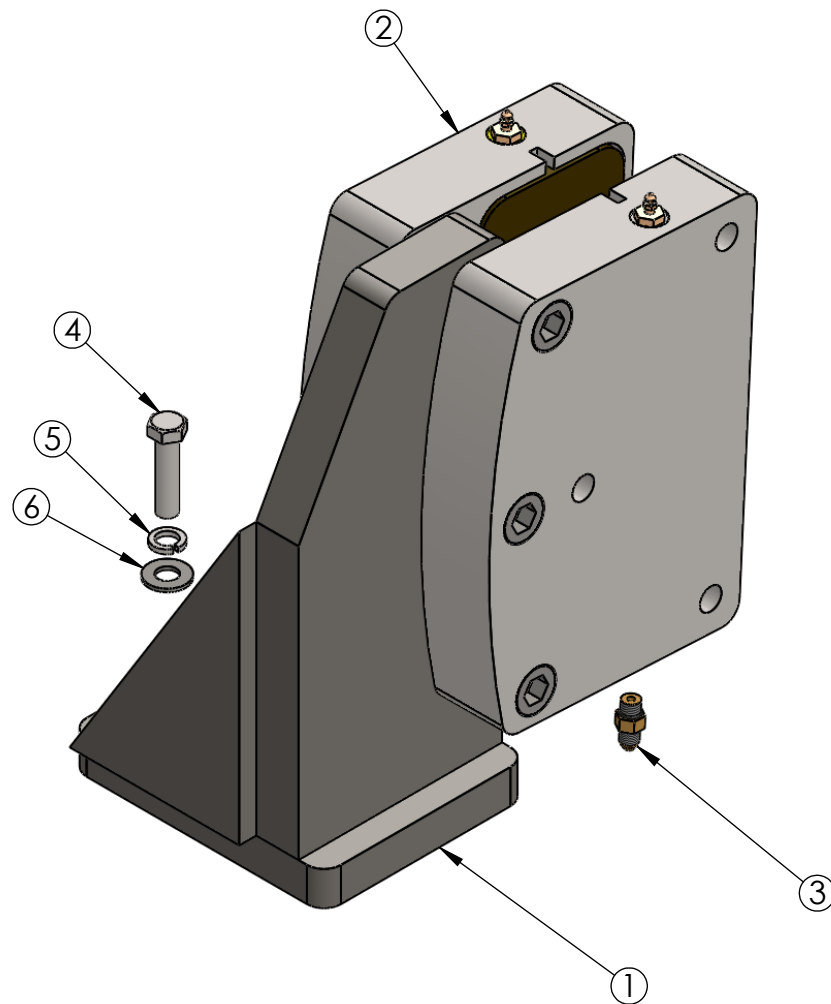
ITEM	PART NUMBER	DESCRIPTION	QTY.
1	M04065	Manifold, Boom Level wind	1
2	B15051	Bracket, Bulkhead	2
3	F05170	Fitting, -6 JIC bulkhead	8



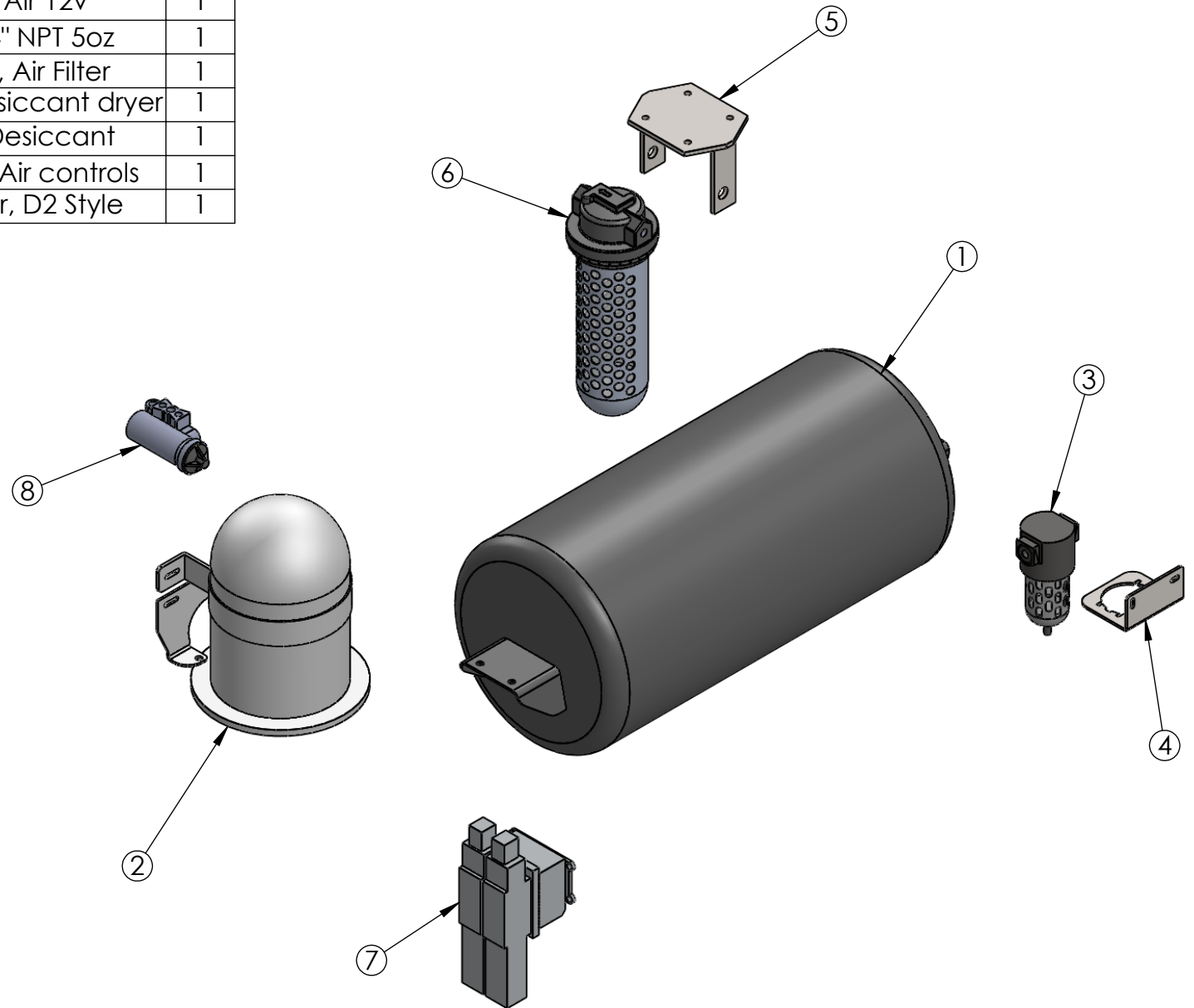
ITEM	PART NUMBER	DESCRIPTION	QTY.
1	C04040	Caliper Half, Countersink	1
2	C04039	Caliper Half, Threaded	1
3	P08004	3-3/8" Piston	4
4	O01225	Seal Source TS-340	4
5	B18005	Bleeder, -4 o-ring	2
6	P01011	10" HD brake pad	2
7	S04251	3/4-16 x 4-1/2 SHCS	3



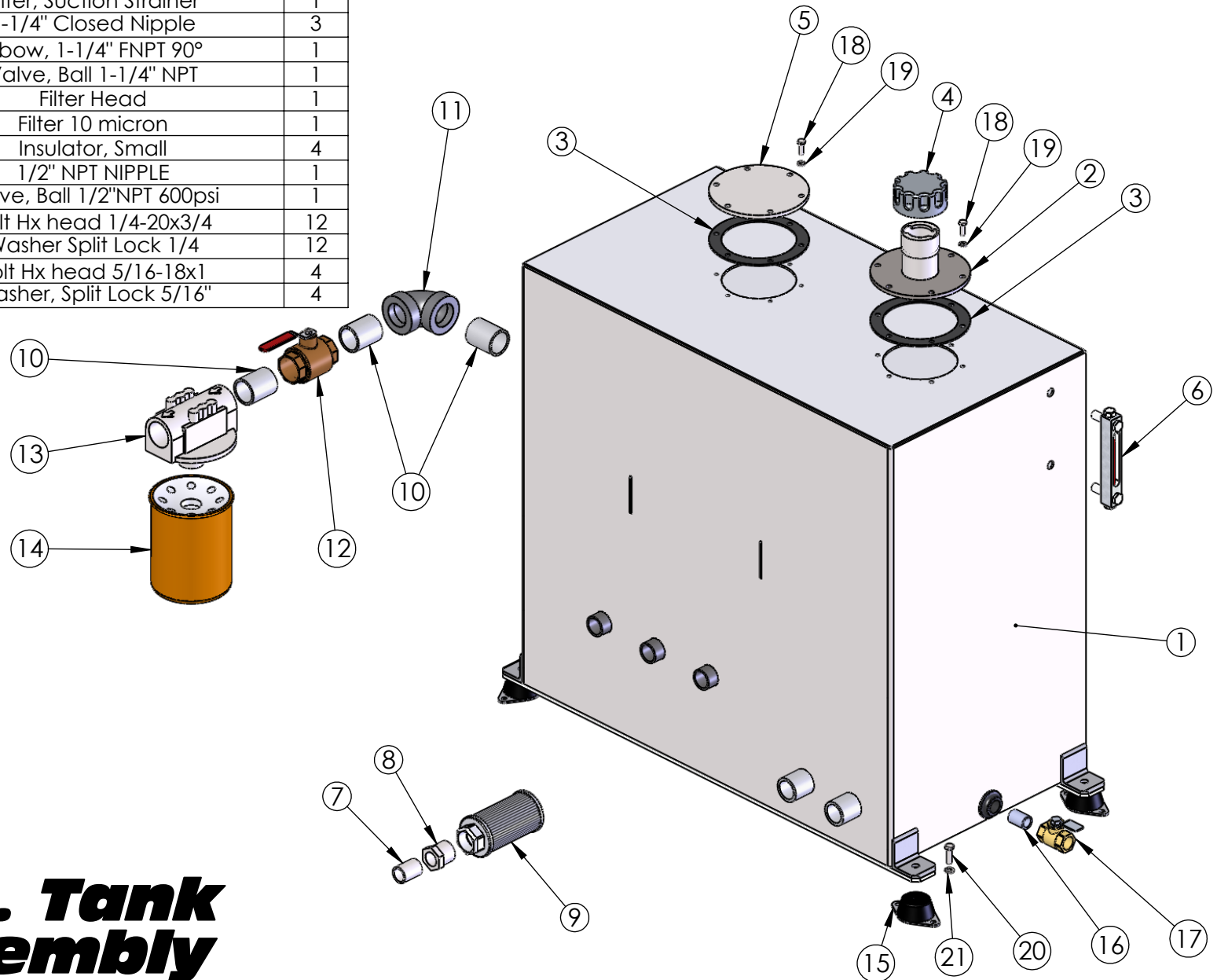
ITEM	PART NUMBER	DESCRIPTION	QTY.
1	B15941	Bracket, Caliper Mount ODP100PPST	1
2	C04032A	10" HD Brake Caliper w/o spacer	1
3	F05042	Fitting, 4-4 Str SAE	2
4	B11366	Bolt Hx head 1/2-13x2	4
5	W01565	Washer, Split Lock 1/2"	4
6	W01005	Washer Flat SAE 1/2"	4



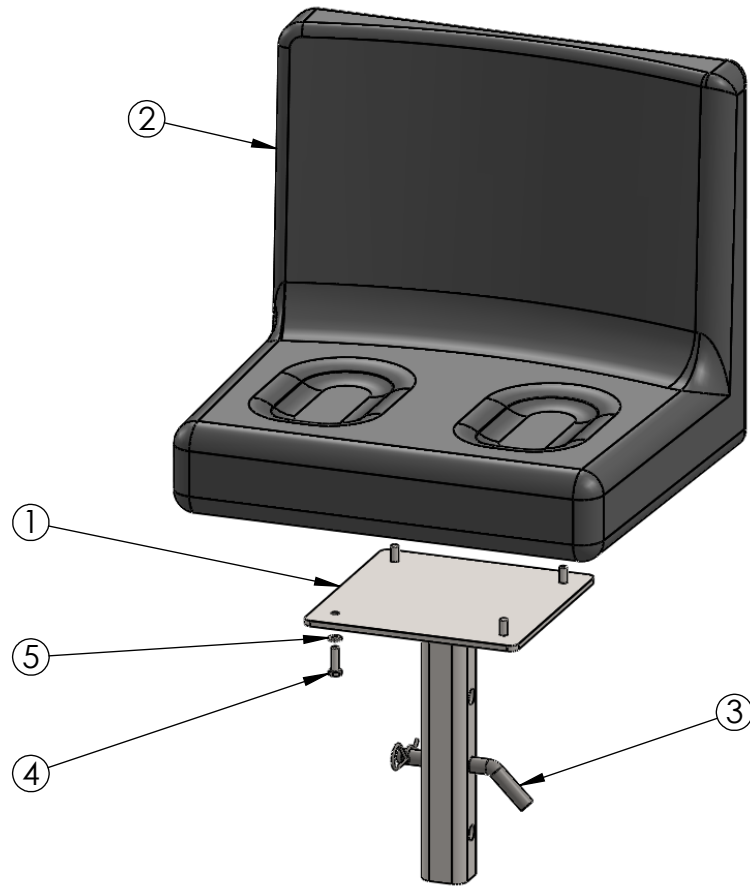
ITEM NO.	PART NUMBER	DESCRIPTION	QTY.
1	T01041	Tank, Air large	1
2	D32064	Dryer, Air 12v	1
3	F04064	Filter 1/4" NPT 5oz	1
4	B15012	Bracket, Air Filter	1
5	B15092	Bracket, Desiccant dryer	1
6	D32063	Dryer - Desiccant	1
7	M04066	Manifold, Air controls	1
8	G18000	Governor, D2 Style	1



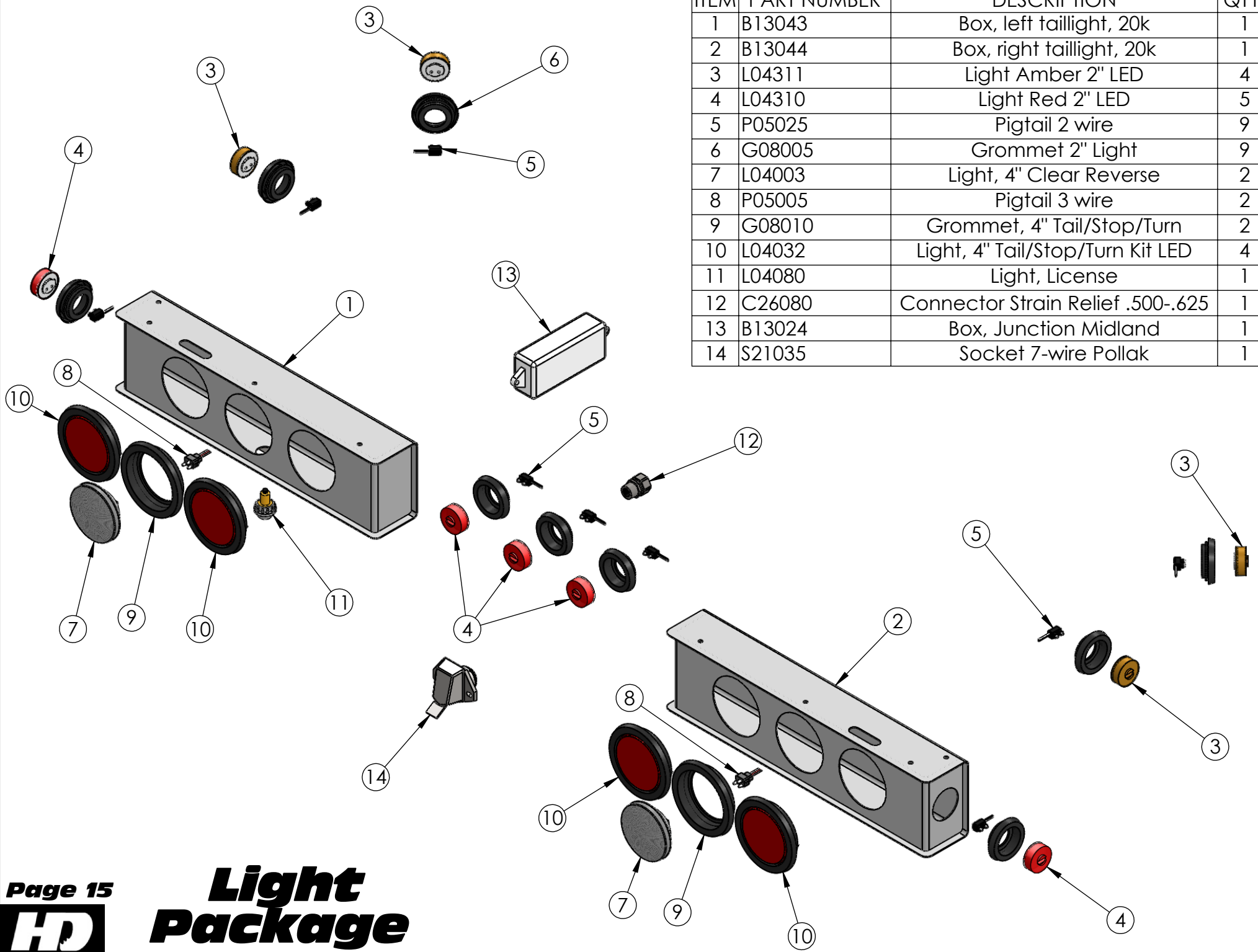
ITEM NO.	PART NUMBER	DESCRIPTION	QTY.
1	T01958	Tank, Hyd 60 gal, ODP60-3	1
2	N07002	Neck, Hydraulic fill	1
3	G01165	Gasket tank filler	2
4	C06155A	Cap, Hydraulic	1
5	C29203	Cover, Tank Access	1
6	G02046	Gauge, Hyd oil level	1
7	N02013	Nipple 3/4 NPT Closed	1
8	F05815	Fitting 16-12 Reducer	1
9	F04040	Filter, Suction Strainer	1
10	N02005	1-1/4" Closed Nipple	3
11	E01002	Elbow, 1-1/4" FNPT 90°	1
12	V02001	Valve, Ball 1-1/4" NPT	1
13	F04021	Filter Head	1
14	F04020	Filter 10 micron	1
15	I04003	Insulator, Small	4
16	N02012	1/2" NPT NIPPLE	1
17	V02007	Valve, Ball 1/2"NPT 600psi	1
18	B11323	Bolt Hx head 1/4-20x3/4	12
19	W01525	Washer Split Lock 1/4	12
20	B11020	Bolt Hx head 5/16-18x1	4
21	W01048	Washer, Split Lock 5/16"	4



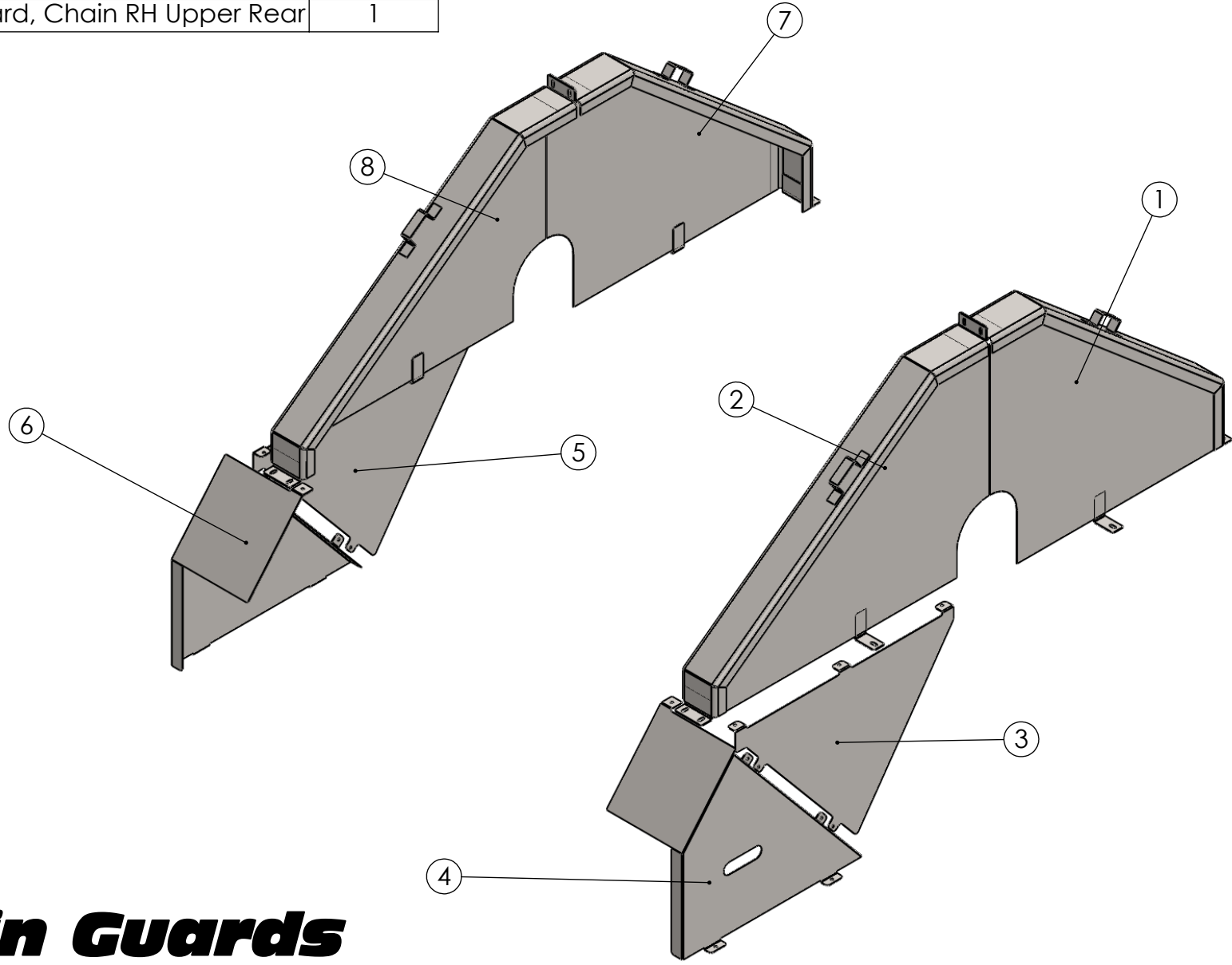
ITEM	PART NUMBER	DESCRIPTION	QTY.
1	P14051	Post, Seat Mount	1
2	S03040	Seat, Operator JD	1
3	P06965	Pin, 5/8" X 3-1/4"	1
4	B11020	Bolt Hx head 5/16-18x1	4
5	W01048	Washer, Split Lock 5/16"	4

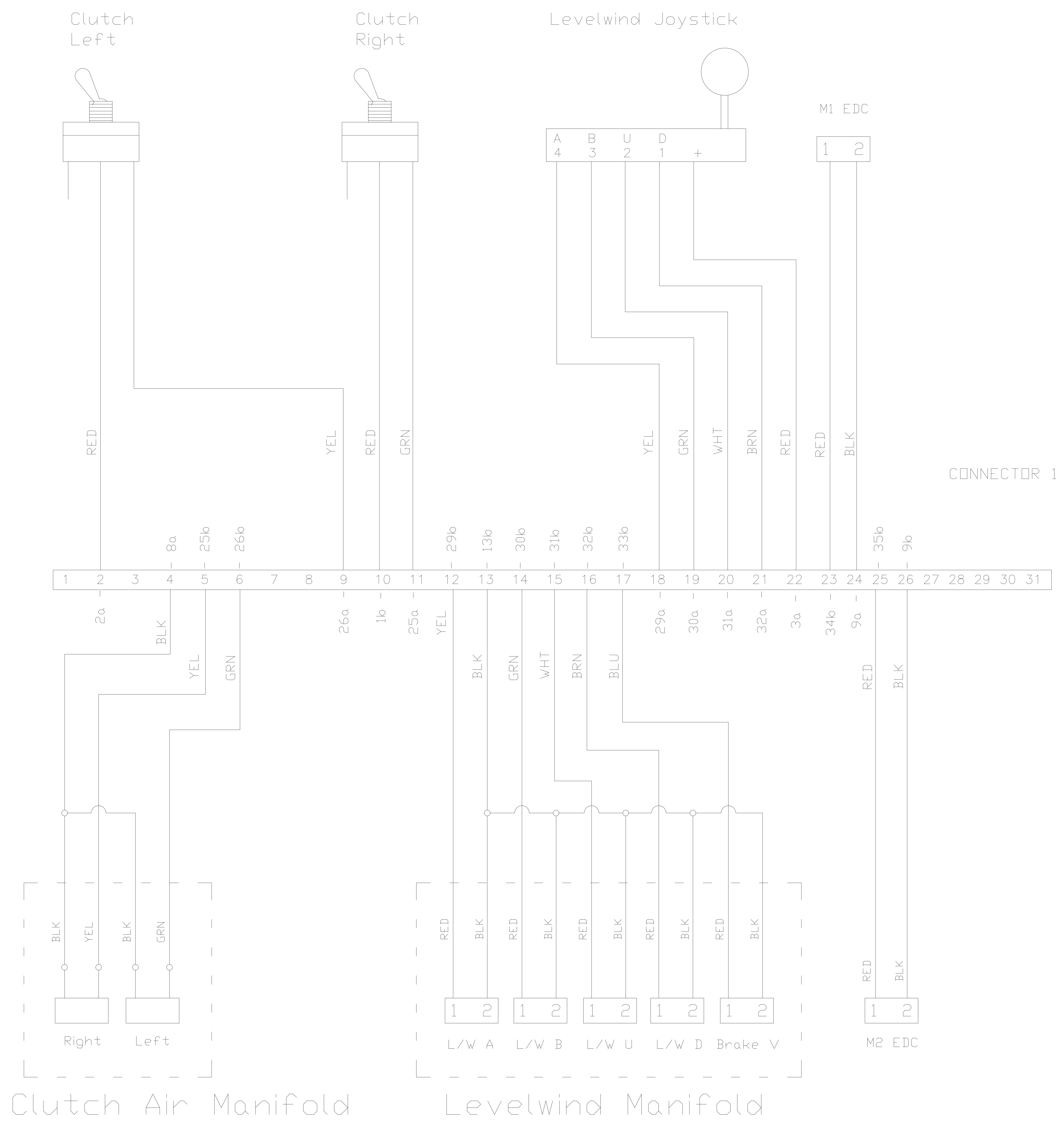


ITEM	PART NUMBER	DESCRIPTION	QTY.
1	B13043	Box, left taillight, 20k	1
2	B13044	Box, right taillight, 20k	1
3	L04311	Light Amber 2" LED	4
4	L04310	Light Red 2" LED	5
5	P05025	Pigtail 2 wire	9
6	G08005	Grommet 2" Light	9
7	L04003	Light, 4" Clear Reverse	2
8	P05005	Pigtail 3 wire	2
9	G08010	Grommet, 4" Tail/Stop/Turn	2
10	L04032	Light, 4" Tail/Stop/Turn Kit LED	4
11	L04080	Light, License	1
12	C26080	Connector Strain Relief .500-.625	1
13	B13024	Box, Junction Midland	1
14	S21035	Socket 7-wire Pollak	1

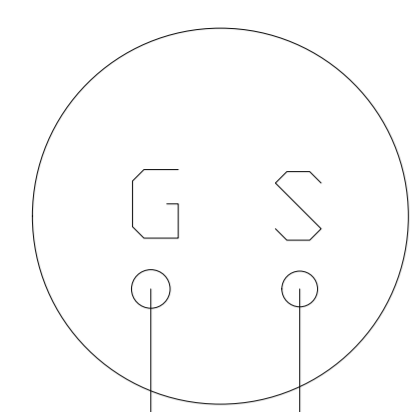


ITEM NO.	PART NUMBER	DESCRIPTION	QTY.
1	G09072	Guard, Chain LH Upper Rear	1
2	G09073	Guard, Chain LH Upper Rear	1
3	G09076	Guard, Chain LH Lower Rear	1
4	G09077	Guard, Chain LH Lower Front	1
5	G09074	Guard, Chain RH Lower Rear	1
6	G09075	Guard, Chain RH Lower Front	1
7	G09070	Guard, Chain RH Upper Rear	1
8	G09071	Guard, Chain RH Upper Rear	1

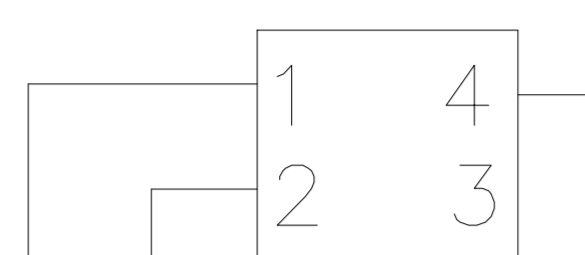




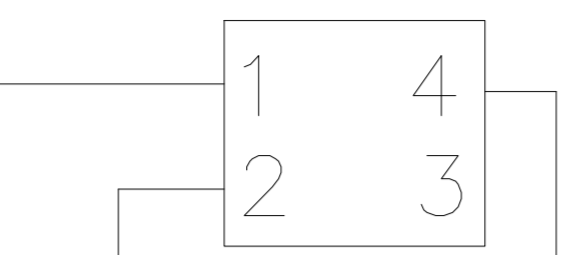
Fuel level



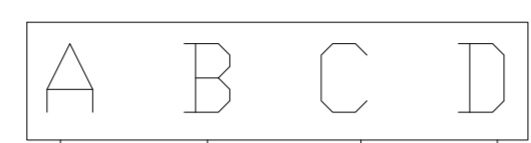
charge psi



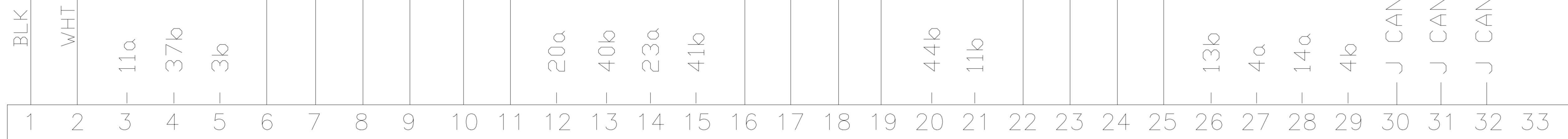
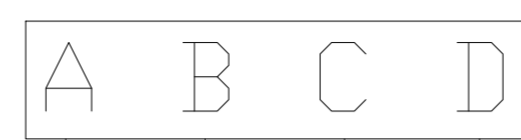
sys psi



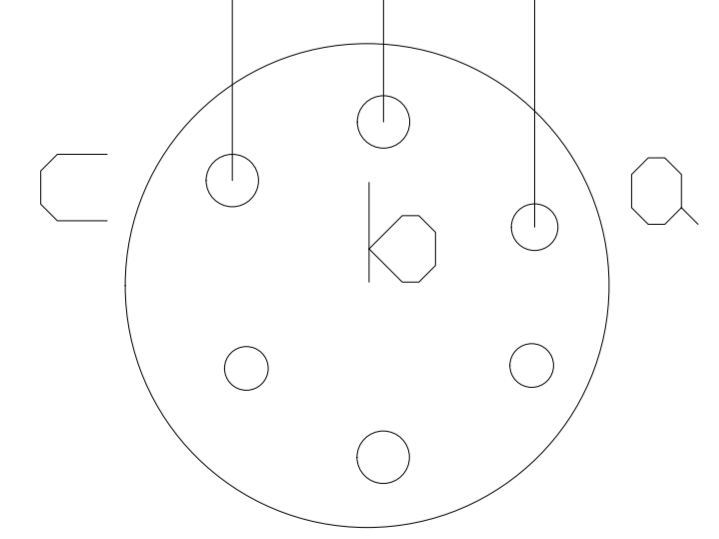
M1 sensor



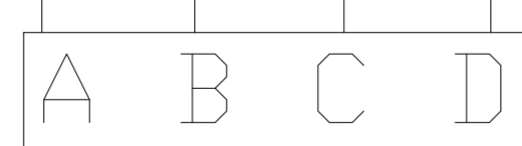
Pump EDC



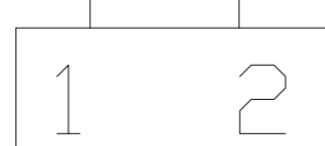
CONNECTOR 2



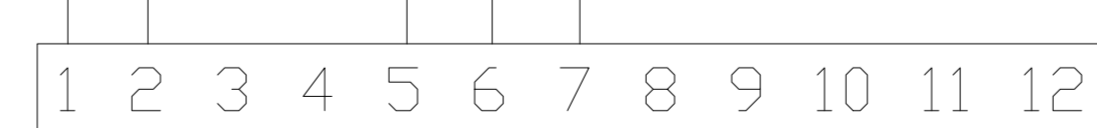
US Sensor



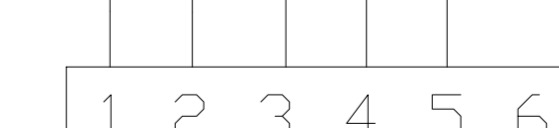
M2 sensor



PRRV



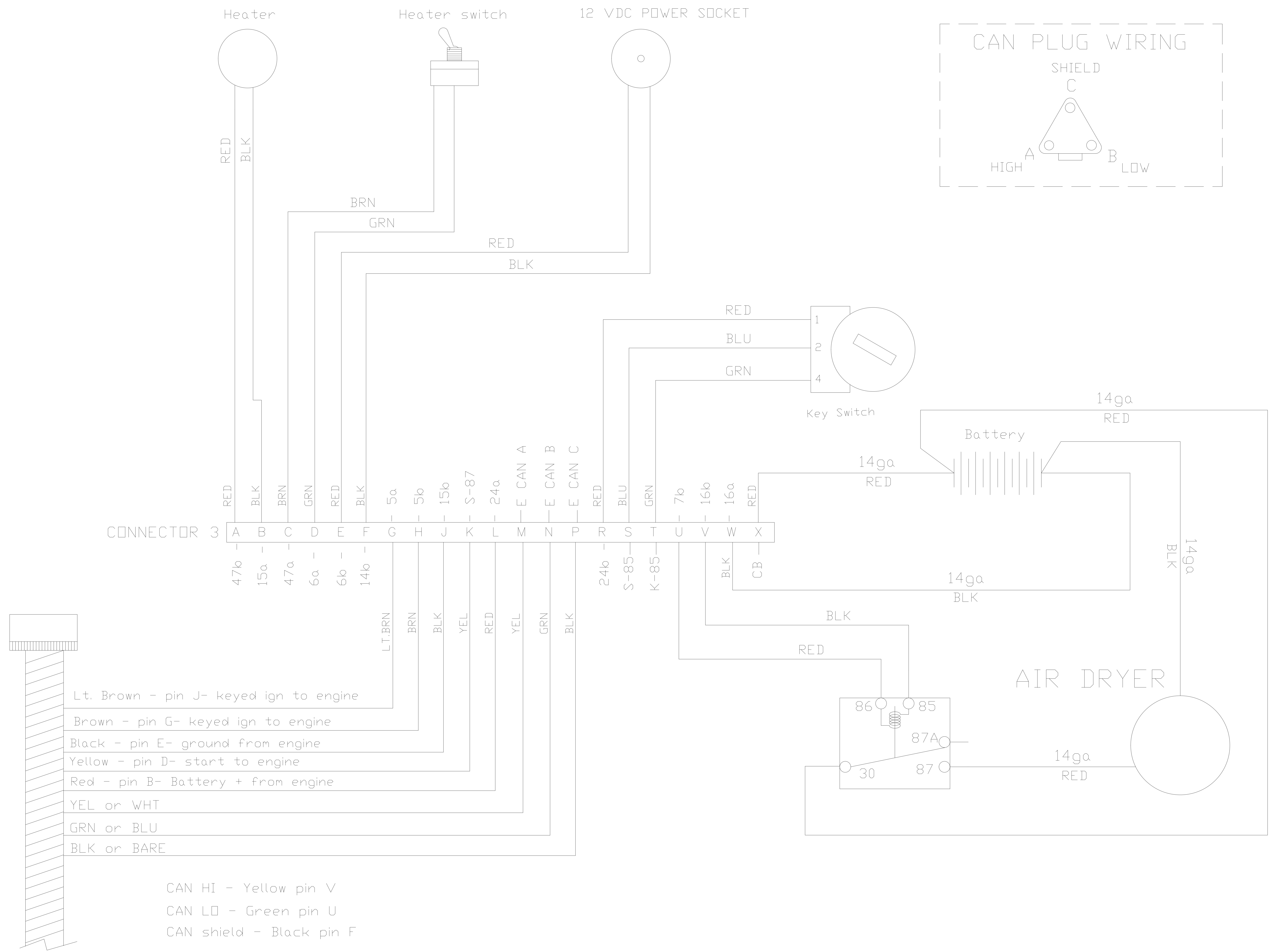
Display



Joystick

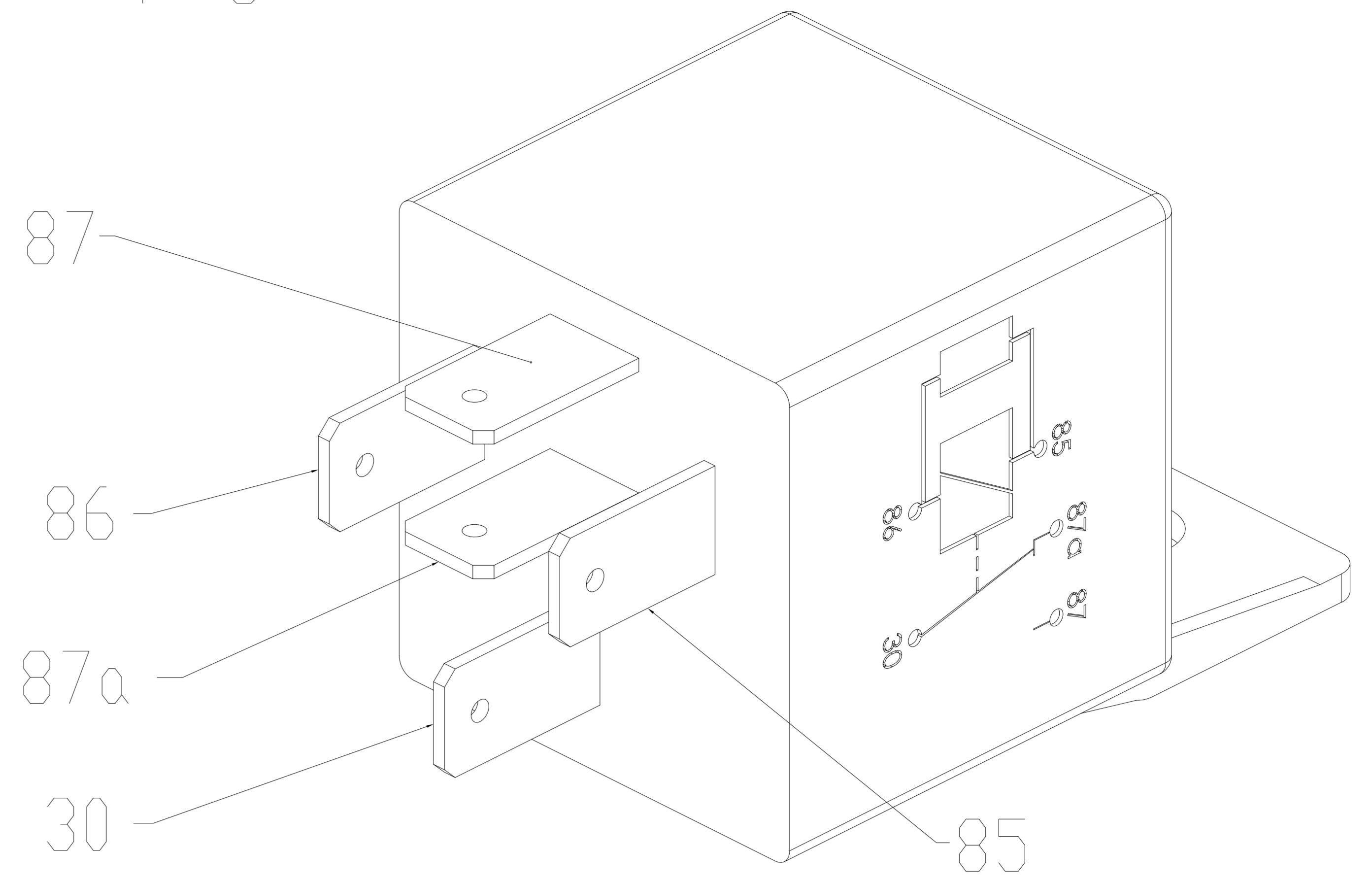
Jumper

110"

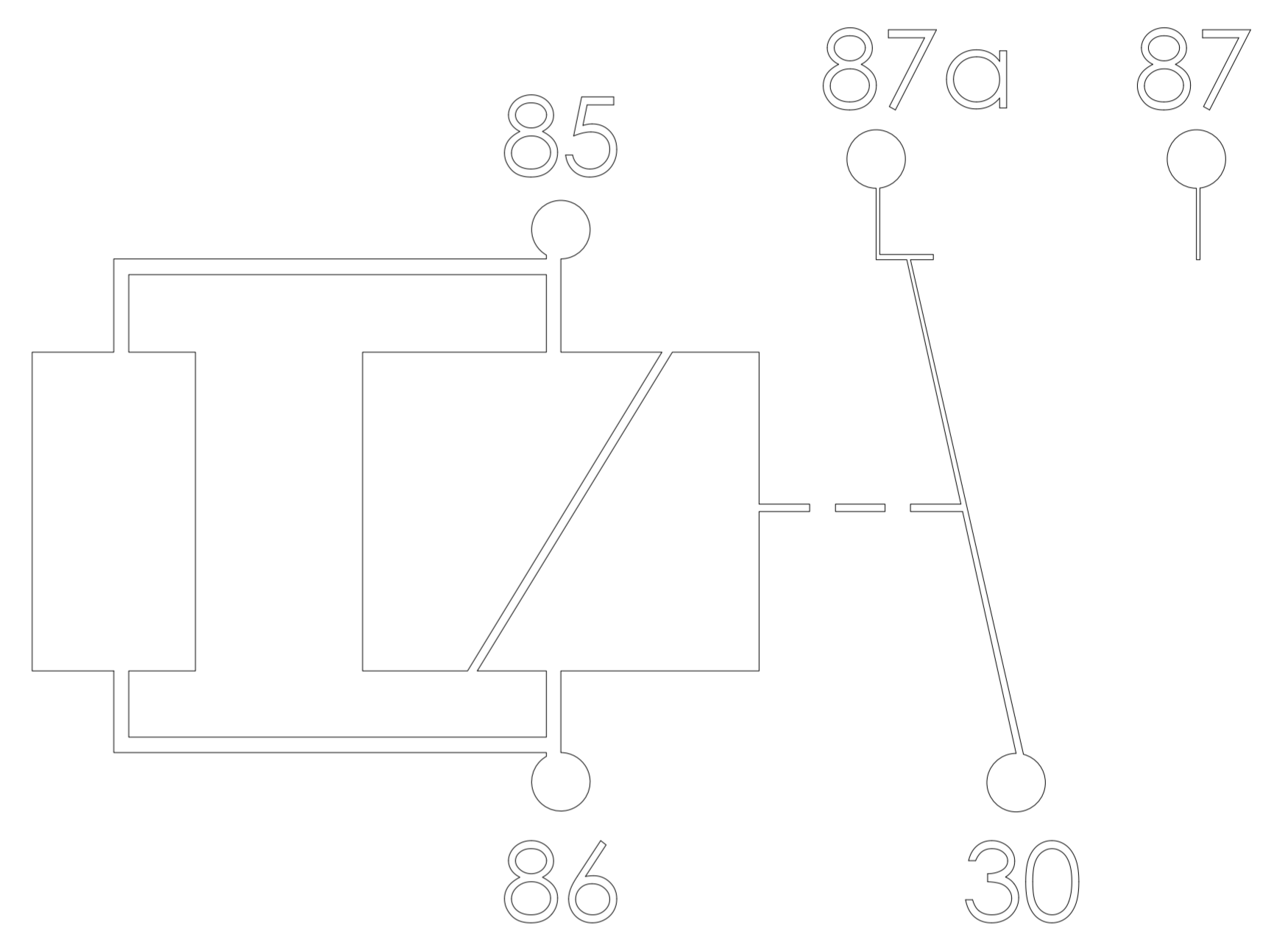
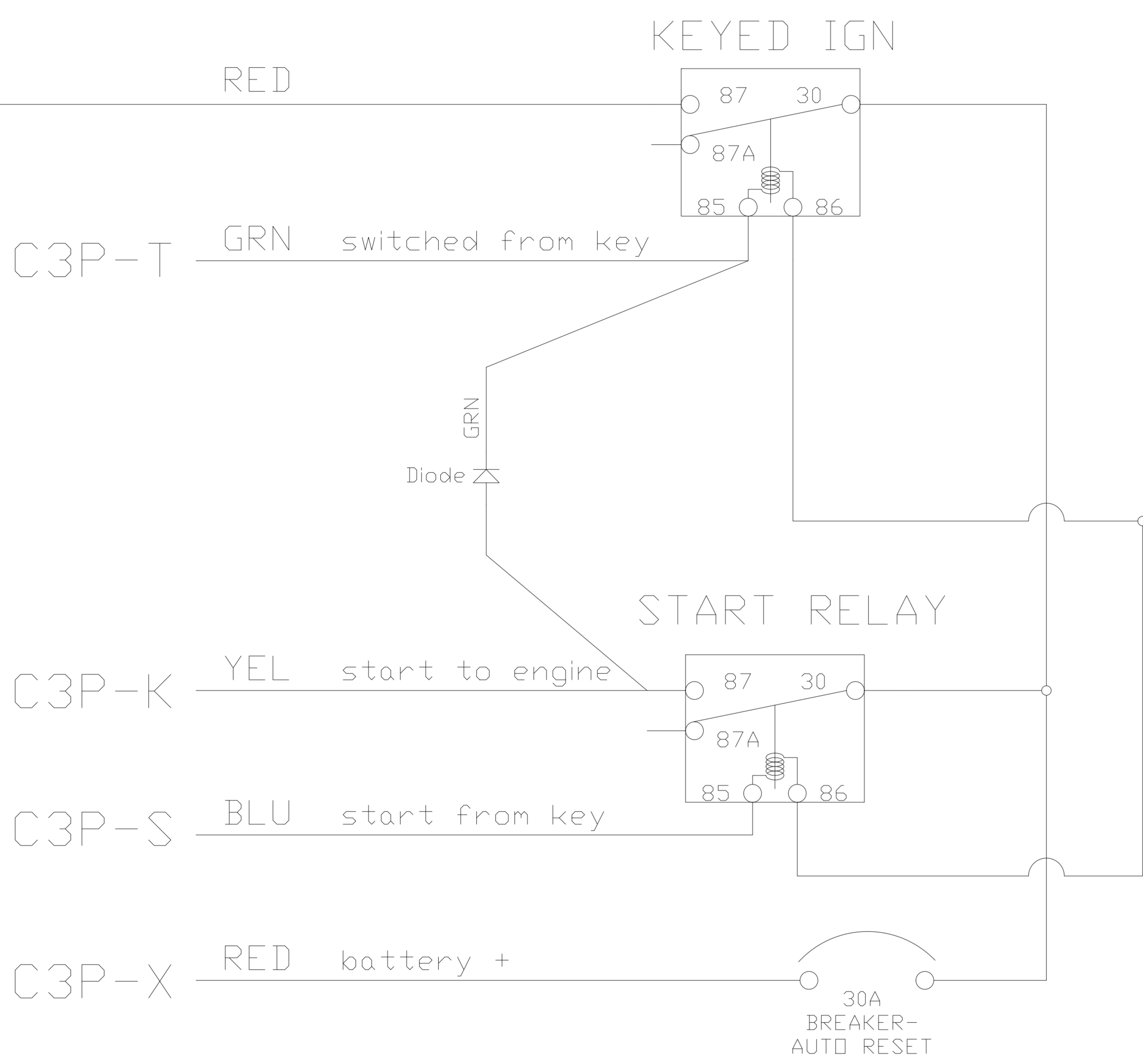


DDP100PPST TERMINALS page 1

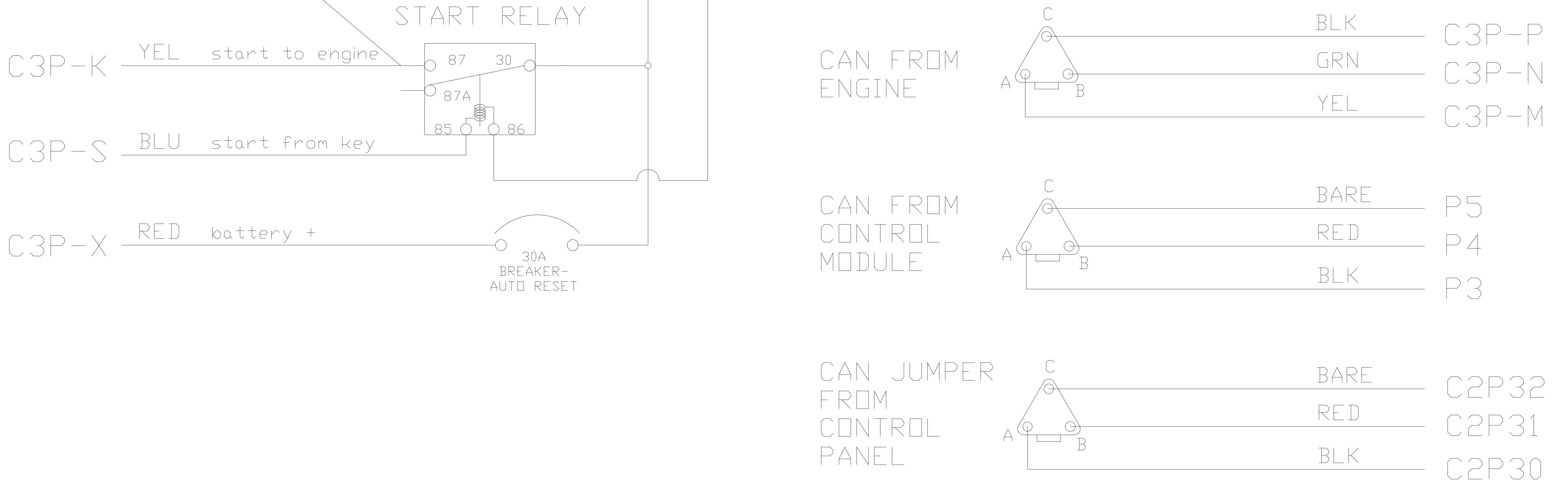
		a		b	
	RED	⊖ □ 1		□ ⊕	RED C1P10
C1P2	RED	⊖ □ 2		□ ⊕	RED P2
C1P22	RED	⊖ □ 3		□ ⊕	RED C2P5
C2P27	RED	⊖ □ 4		□ ⊕	RED C2P29
C3P-G	LT.BRN	⊖ □ 5		□ ⊕	BRN C3P-H
C3P-D	RED	⊖ □ 6		□ ⊕	RED C3P-E
		⊖ □ 7		□ ⊕	RED C3P-U
	BLK	⊖ □ 8		□ ⊕	BLK C1P13
C1P4	BLK	⊖ □ 9		□ ⊕	BLK C1P26
C1P24	BLK	⊖ □ 10		□ ⊕	BLK
C2P1	BLK	⊖ □ 11		□ ⊕	BLK C2P21
C2P3	WHT	⊖ □ 12		□ ⊕	BLK P1
C2P23	BLK	⊖ □ 13		□ ⊕	BLK C2P26
C2P24	BLK	⊖ □ 14		□ ⊕	BLK C3P-F
C2P28	BLK	⊖ □ 15		□ ⊕	BLK C3P-J
3P-B	BLK	⊖ □ 16		□ ⊕	BLK C3P-V
3P-W		⊖ □ 17		□ ⊕	
	RED	⊖ □ 18		□ ⊕	RED P8
C2P7	RED	⊖ □ 19		□ ⊕	
C2P10	RED	⊖ □ 20		□ ⊕	RED C2P16
C2P12	BLK	⊖ □ 21		□ ⊕	BLK P9
C2P6	BLK	⊖ □ 22		□ ⊕	
C2P9	BLK	⊖ □ 23		□ ⊕	BLK C2P18
C2P14	RED	⊖ □ 24		□ ⊕	RED C3P-R
C3P-L	GRN	⊖ □ 25		□ ⊕	YEL C1P5
C1P11	YEL	⊖ □ 26		□ ⊕	GRN C1P6
C1P9		⊖ □ 27		□ ⊕	
	YEL	⊖ □ 28		□ ⊕	YEL C1P12
C1P18	GRN	⊖ □ 29		□ ⊕	GRN C1P14
C1P19	WHT	⊖ □ 30		□ ⊕	WHT C1P15
C1P20	BRN	⊖ □ 31		□ ⊕	BRN C1P16
C1P21	GRN	⊖ □ 32		□ ⊕	BLU C1P17
P6	YEL	⊖ □ 33		□ ⊕	RED C1P23
P44	YEL	⊖ □ 34		□ ⊕	RED C1P25
P39	WHT	⊖ □ 35		□ ⊕	WHT C2P2
P30	WHT	⊖ □ 36		□ ⊕	WHT C2P4
P14	WHT	⊖ □ 37		□ ⊕	WHT C2P8
P15	WHT	⊖ □ 38		□ ⊕	WHT C2P11
P16	WHT	⊖ □ 39		□ ⊕	WHT C2P13
P24	WHT	⊖ □ 40		□ ⊕	GRN C2P15
P10	WHT	⊖ □ 41		□ ⊕	WHT C2P17
P23	WHT	⊖ □ 42		□ ⊕	GRN C2P19
P7	YEL	⊖ □ 43		□ ⊕	RED C2P20
P45	YEL	⊖ □ 44		□ ⊕	RED C2P22
P43	YEL	⊖ □ 45		□ ⊕	GRN C2P25
P42	BRN	⊖ □ 46		□ ⊕	RED C3P-A
C3P-C		⊖ □ 47		□ ⊕	
		⊖ □ 48		□ ⊕	



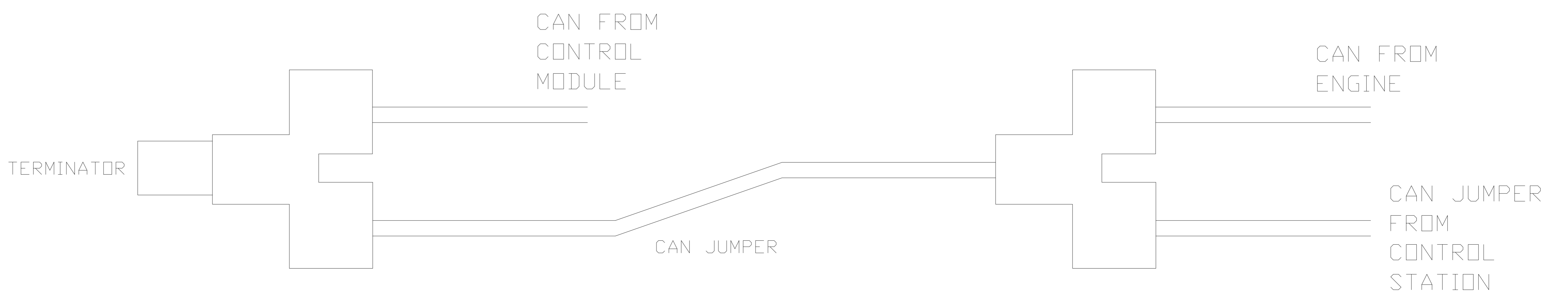
1a

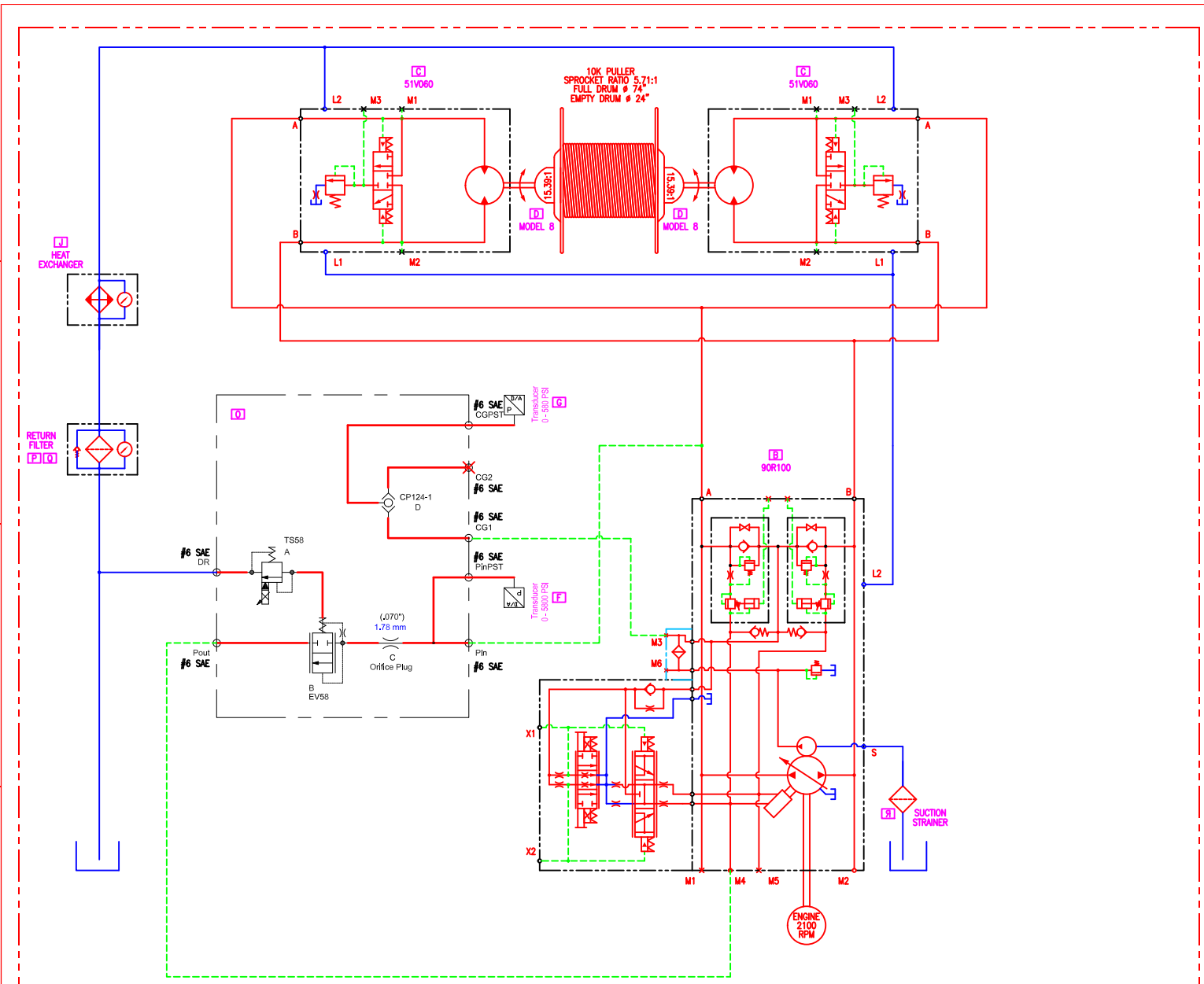


10b



A is CAN HI+
 B is CAN LO-
 C is CAN SHIELD





REVISIONS		
DESCRIPTION	DATE	REV
X		X

REV	QTY	P/N	DESCRIPTION
DR	1	n/a	SUCTION SCREEN
DO	1	n/a	FILTER ELEMENT
DP	1	n/a	FILTER HEAD
DO	1	n/a	Constant Tension Press Lim Man
DU	1	11067500_p1	Screw/Level Wind Manifold
DM	1	PC20	PROP CONTROLLER
DL	1	10100946	50 pin connector kit
DK	1	10100900	MC5010 CONTROLLER
DJ	1	M-40	HEAT EXCHANGER
DI	1	J5600NYCANFSCN331A40BNNRRRNNRR	JOYSTICK
DH	1	10100890	Display DP600
DG	1	11044545	0 to 40 bar [580 psi]
DF	1	11044548	0 to 400 bar [5800 psi]
DE	1	1035090	SONIC SENSOR
DD	2	8S2C1415F585T	PLANETARY W/BRAKE & SPINDLE
DC	2	51V060R51N1B1VBG0ACAD18E4D400	HYDROSTATIC MOTOR
DB	1	X	X
DA	1	90R100KP1A860S4F1E03GBA292924	FRONT HYDROSTATIC PUMP

LOC	REV	DESCRIPTION	CHK'D	INT	6-23-09
SHEET 1 OF 1					
DRAWN BY: LUTZ					
FILE NAME: N/A					
CHECKED: N/A					

THIS DRAWING CONTAINS INFORMATION PROPRIETARY TO BERENDSEN FLUID POWER. IT IS SUBMITTED IN CONFIDENCE AND IS TO BE SOLELY FOR THE PURPOSE OR PROJECT FOR WHICH IT IS FURNISHED AND RETURNED UPON REQUEST. NO ALTERATION OR MODIFICATION OF THE INFORMATION CONTAINED HEREIN IS TO BE MADE WITHOUT FIRST OBTAINING THE WRITTEN APPROVAL OF BERENDSEN FLUID POWER. THIS DRAWING AND SUCH INFORMATION IS NOT TO BE REPRODUCED, TRANSMITTED, DISCLOSED OR USED OTHERWISE IN WHOLE OR IN PART WITHOUT THE WRITTEN AUTHORIZATION OF BERENDSEN FLUID POWER. ANY REPRODUCTION, TRANSMISSION, DISCLOSURE OR USE OF THE INFORMATION CONTAINED HEREIN WITHOUT THE WRITTEN AUTHORIZATION OF BERENDSEN FLUID POWER IS AT THE SOLE RISK OF THE USER AND WITHOUT LIABILITY TO BERENDSEN FLUID POWER.

TITLE: **HOGG & DAVIS**
10K Constant Tension

DATE	SCALE	SIZE	TOLERANCE UNLESS NOTED	DRAWING NUMBER	REV
6-23-09	N/A	D	UNLESS NOTED DECIMALS 0.1/32 2 PLACE (0.0) 0.010 3 PLACE (0.00) 0.005	1198	S2